



1
Arey/Lux. Grotte du Trilobite - Croche de Cef.



Grotte du Trilobite - Croche de Cef.

A VI. Dg. 4259 - R VI. Dg. 4259 - 58. R VII. yg



58. R VII. yg -

R IXc A14 - Belemnite R IXc A14

R IXc A14

R IXc A14

R Xb - A14



R Xb. A14

R Xc. A13. 1236 - Belemnite

A Xc A13. 1236. Belemnite

R IXc. A14



R IXc. A14

R Xb. A14

58. R VII b B11 + D13. 6104 + C11. 6148 - Belemnite



R VI. D12. 562. Galer "nepouchoin".











































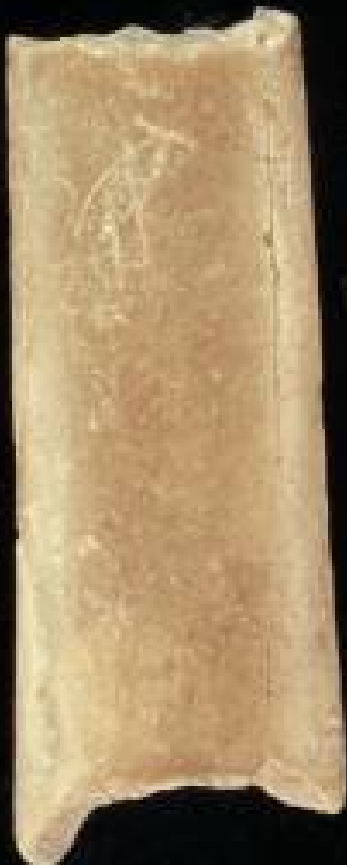
































58.R.Xa.C7.3536 - 58.R.Xa.Y13 - Incisive bison - I, gauche. 58.R.Xa.Y13 - R.Xc.C7(19) ☐ droite Renard -
"bouche en l'air"



R.Xc.C7(19) ☐ droite Renard



R.Xc.C7(19).Renard - R.Xc.C8.☐ d. Renard - 63.R.VI.VI.EB.10 -



R.VI.VI.EB. deursale ?

R.Vc.Y9 -



R.Vc.Y8 -

R.Xc.B5.1021 -

R.Xb2.C9



R.Xb2.C9



62.R.Xb2.B11 -

R.Xb2.C9



R.VII - W10 + 58.R.VII W10 -

R.VII.D8.☐ G Renard -



















































































28
29
R 2111





















Handwritten text on a curved, light-colored fragment, possibly a piece of wood or bone, with a dark background. The text is arranged in several lines and appears to be a mix of letters and symbols, possibly representing a name or a specific code. The characters are dark and somewhat irregular, suggesting they were hand-drawn or carved. The fragment is curved, and the text follows its shape. The characters include 'A', 'B', 'C', 'D', 'E', 'F', 'G', 'H', 'I', 'J', 'K', 'L', 'M', 'N', 'O', 'P', 'Q', 'R', 'S', 'T', 'U', 'V', 'W', 'X', 'Y', 'Z', and some symbols like '||' and '|||'. The text is written in a way that suggests it might be a list or a set of instructions.

11
PC 58
RIVISY
1964































































63. R x b2. B11. 3175 - incisives de Reanne séparées - I₁ G -

I₂ G -



63. R x b2. B11. 3175. incisives de Reanne séparées - I₃ - C -



56. R X c 211. I₁ G. Ous -

R V. Ancilla - (Bucinoise?)
In le'rien arverne



Ancilla (Bucinoise?)



R x b - 1434 bis - c gauche Renard. 28

X

56. R x c. A11. 1...75



56. R x c. A11. 1...75 - I₂ ou I₃ droite Bison -

R V. D10. c gauche Renard?



c gauche Renard? - 58. R VII - C6 - Fragments jouselopne - os -

R VII. D3. 4460
Fragments jouselopne









































































5 2



R VII . DB . 4660 . pendeloque -

R VII . B11 . 4228 : grand fragment | pendeloque
ss numero - petit fragment



R VII . B11 . 4.228
ss numero -

R VII - C80 - Fragment pendeloque -

R VII - C10 -

R Xb - A6.454



R Xb . A6.454 - \bar{c} droite Renaud -

R Xb . Y11 - pendeloque X



58 . R Xb . Y11 -

R IX a Y13 - Remu doigt résiduel
postérieur gauche



R IX a - Y13 - Doigt résiduel
Remu - postérieur gauche -

R IX a - D8 - Renaud - \bar{c} droite -



Remu - R IX a . 212 (131) I, droite -

Argy - Trilobaire deb. - \bar{c} droite
oursin



\bar{c} droite - oursin -

ss provenance - \bar{c} droite Renaud -

ss provenance - \bar{c} droite Renaud -





















































































6



55 provenance - c - Grotte Renard -

Grotte des Fées - couche de enf -



Grotte des Fées -

55 provenance -



R 8b. A 8 - I' droite ^X ours -

56. R Xc. A 9. II. 557 ou 957? - I, droite Bison

X



R Xc - A 9. II. 557 ou 957, I, droite Bison -

R Xb2. C12. 203 - I, D Reine -



R Xb2. C12. 203. I, D Reine -

R Xb1b. D10. 248 - Mammotte. Dextre inf.



R Xb1b. D10. 248 - Mammotte dextre inf.

R Xa. A11. 3805 - Mammotte. dextre supérieure



R Xa. A11. 3805 - Mammotte - Dextre supérieure - R VII. C11. 6152 - I, inf. ours -





















































































58. R VII . CII - 6152 - I₂ droite oss.



58. R VII . CII. 6152. I₁ droite oss.

R V. E7. Croche de cap -



R V. E7. Croche de cap.

58. R Xb. Y13. 3899 - ryuckonille.



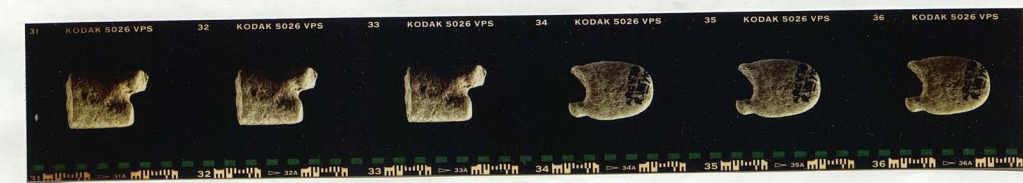
58. R Xb. Y13. 3893. ryuckonille.

R VII. Base de la pendeloque -



R VII - Pendeloque - B15

58. R VII . X11 - pendeloque en pieu -



R VII X11. pendeloque en pieu.

R VIII - Y10. pendeloque en pieu





































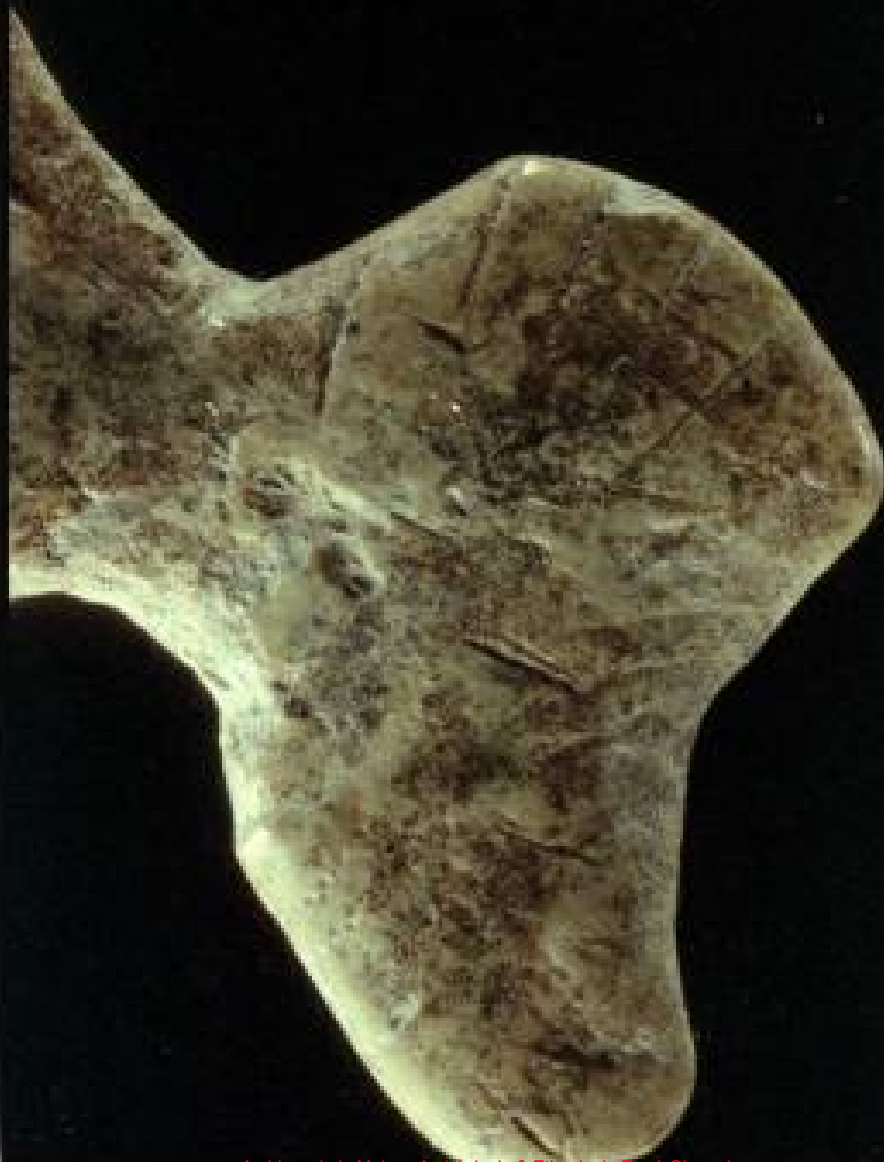






































R. ES. Tenier - Ampullin parisienis -



A.V. ? - sans provenance - R. E. S. Tenier -



R. E. S. Tenier -



R. E. S. Tenier

R. E. S. 5



R. V. E. 7. 27 - Dentale -

R. V. b. Dio. Bayania lacra -



R. V. Dio. Bayania lacra

R. V. E. 6. 4

R. V. E. 6. 4

R. V. D. B. 360

R. V. D. B. 360



R. V. b. Dio - R. E. S. 5 - R. V. D. 7 - R. V. X. 10 - R. E. S. 8

Bayania lacra



R. V. Ancellina buccardis











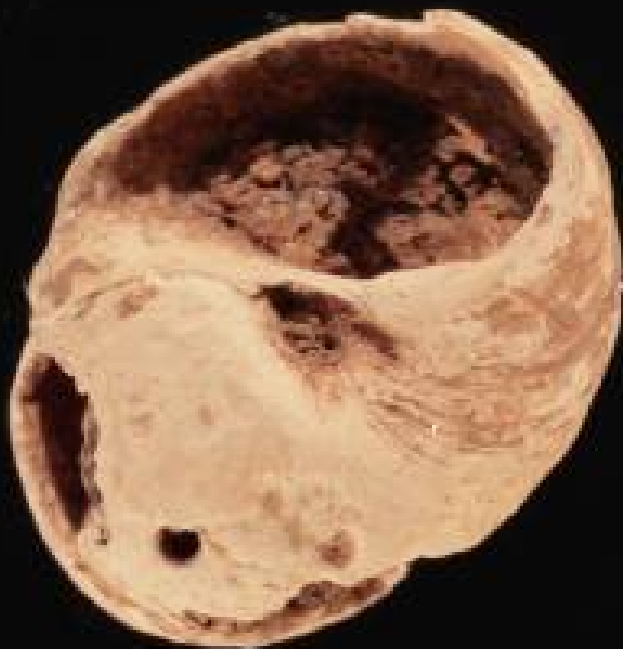
































































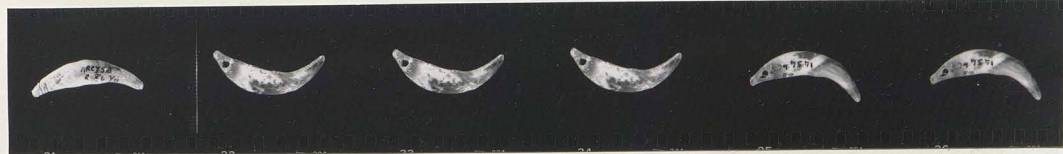


11

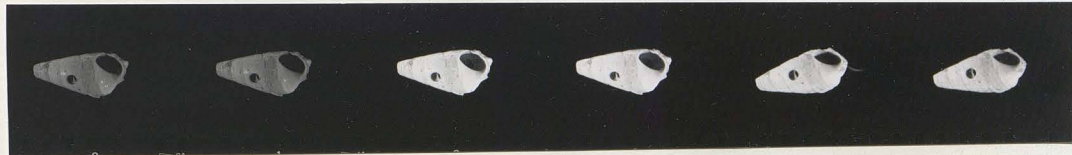


R VII . W10 + R VII . W10 .

58.R x b. YII - 5102 . c. *faucis Renss*



R x b. 1434 bis c. *faucis Renss* -

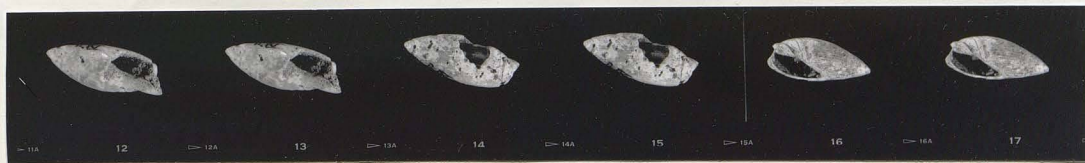


R E . E 6 . 4



R Ib . D10 - REST . R E D T . R E x 10 . R 288 .
Bayanus lucra -

R IV . *Ancilla* - (*Buccinoids*?)

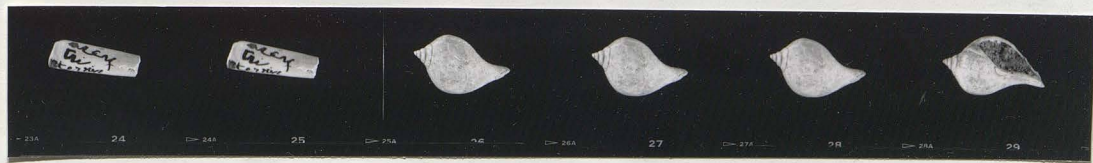


R IV . *Ancilla* (*Buccinoids*?) -

R IV ? *Ancilla buccinoids* -



Arg. Turris - *dentata*



R V . *Sycostoma* -

































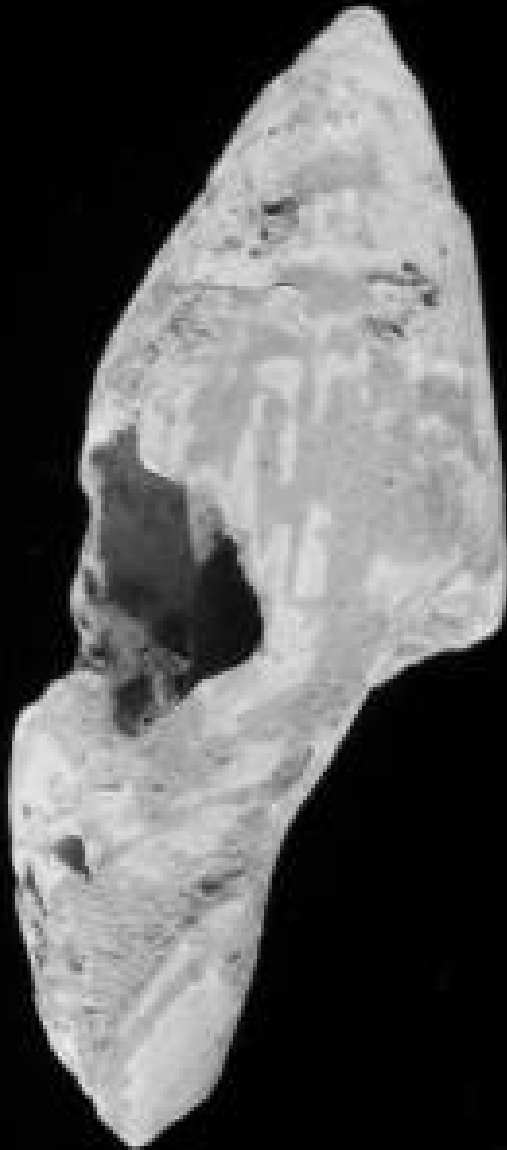


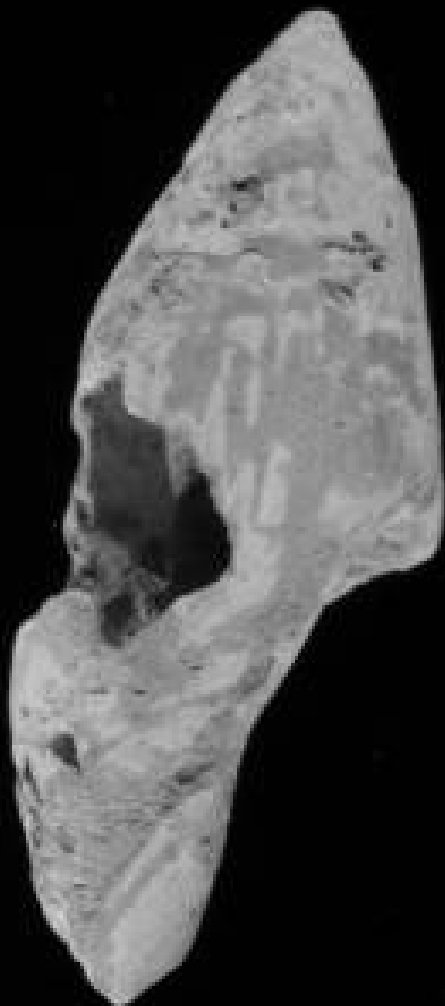


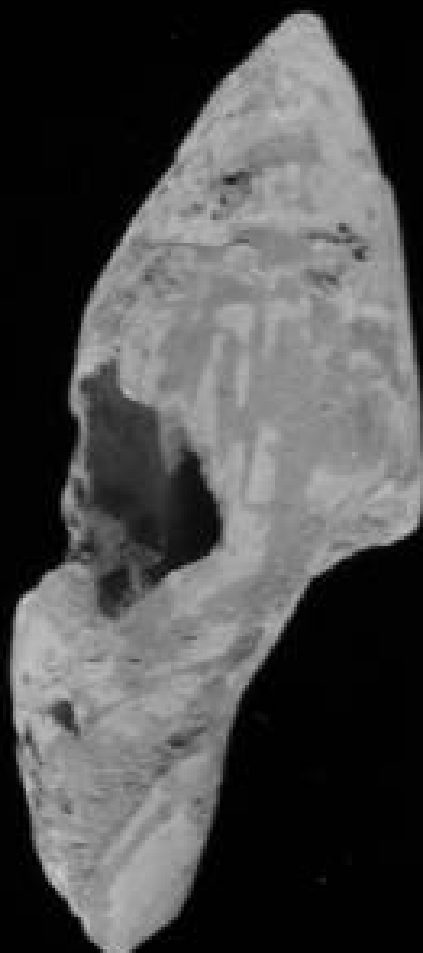


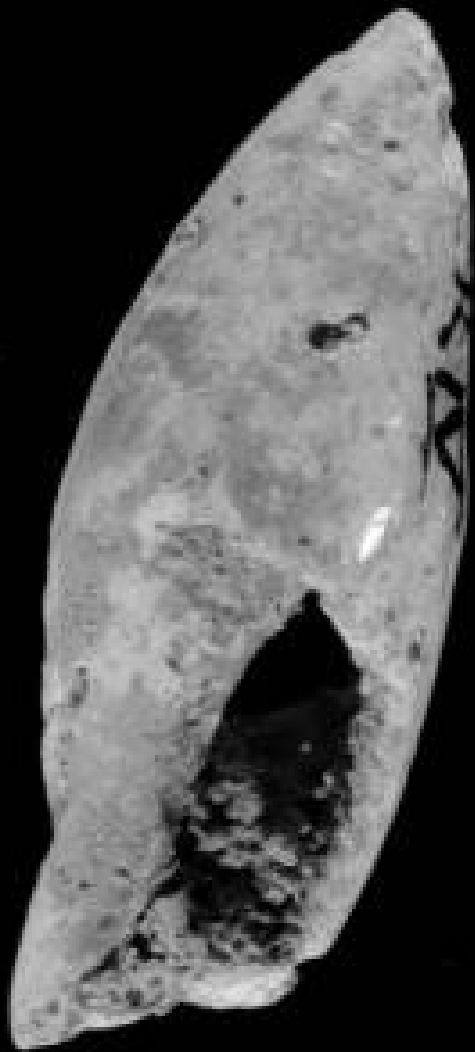


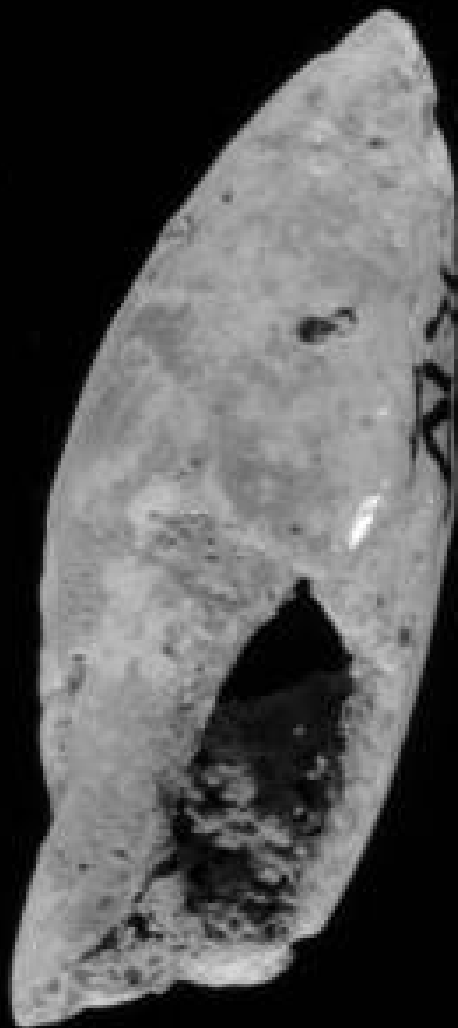
















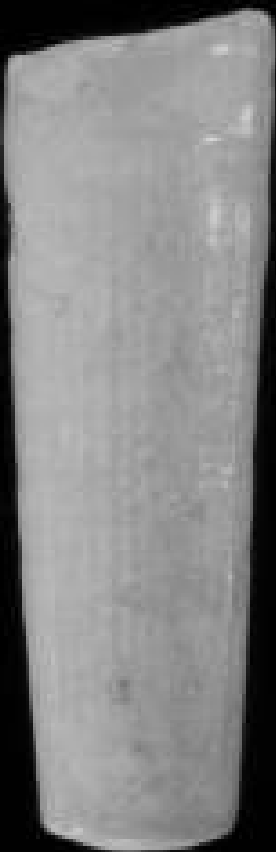


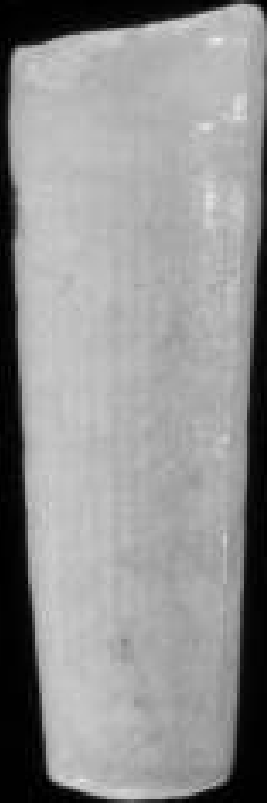


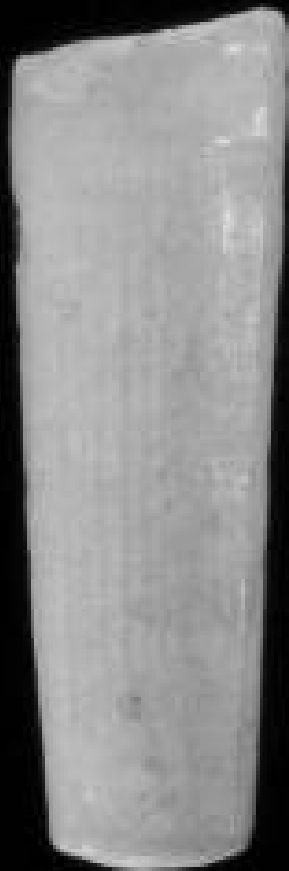
























12



R.E. 27. Dentale



R.E. 30. Baguette lésée -

R.E. 34



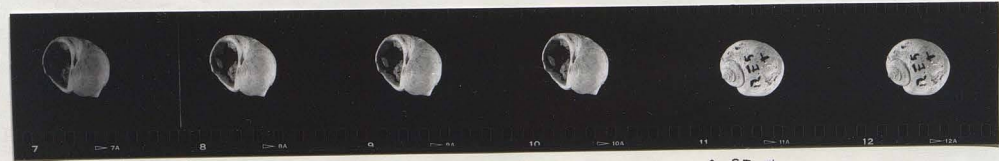
R.E. 5



R.E. 4



R.E. 5. Téméraire -



R.E. T.



R.E. T.



R.E. D3

R.VIII. 10 + 58. R.VIII. 10































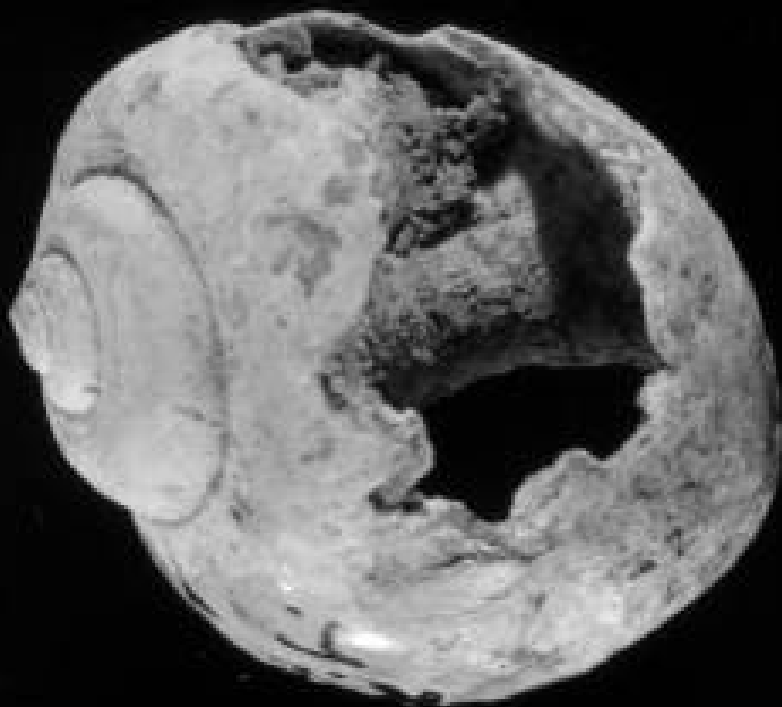


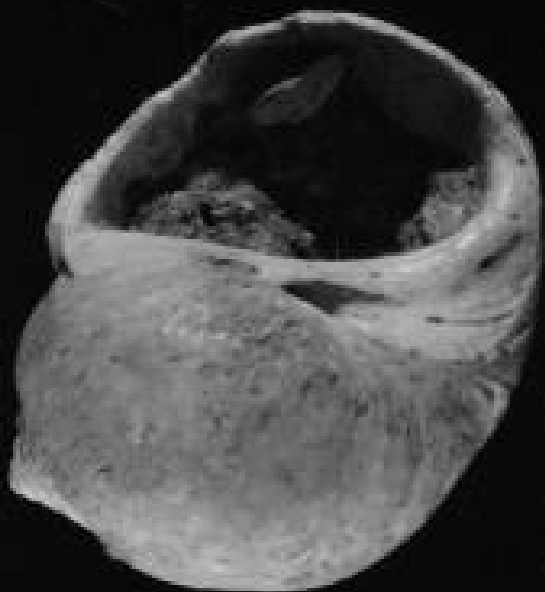


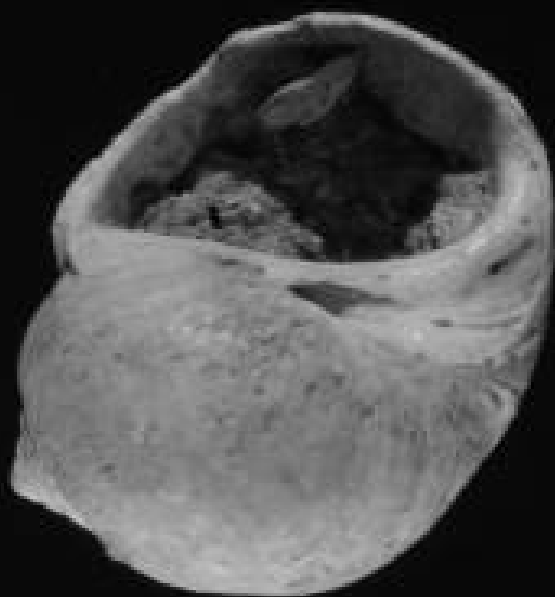




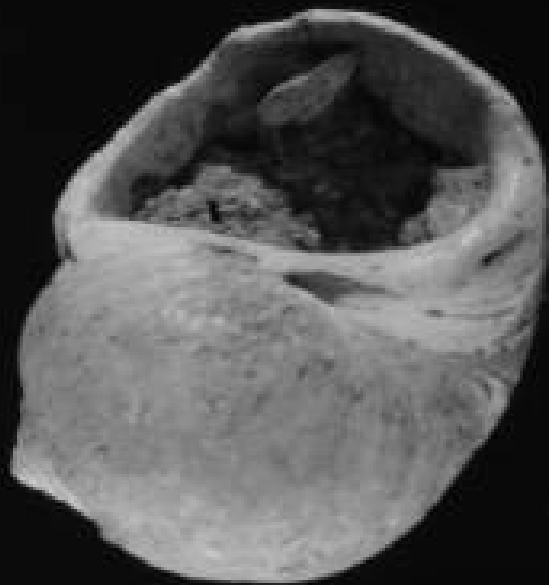








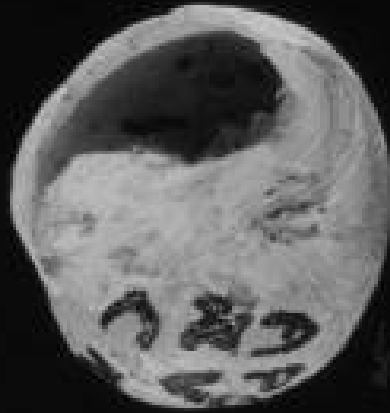




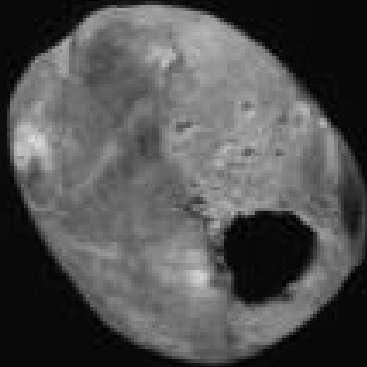








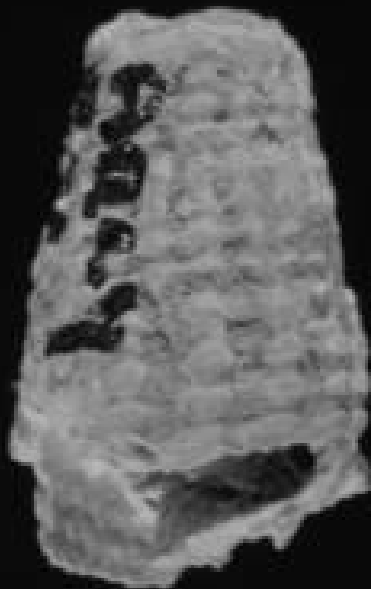












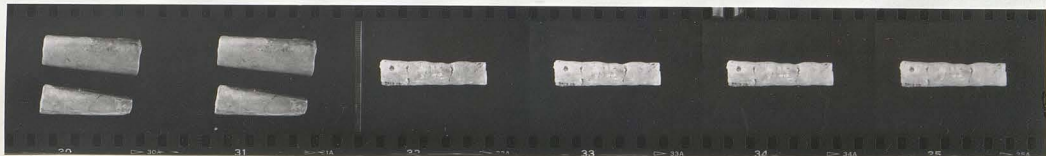






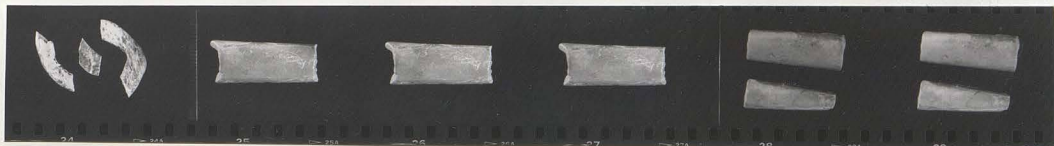


13



R 1xc. A14 - et R Xc A13.1236.

R VIIb. B11 + D13.4104 + C11.6148. Belemnite -



58. R VIIb. B11.4060

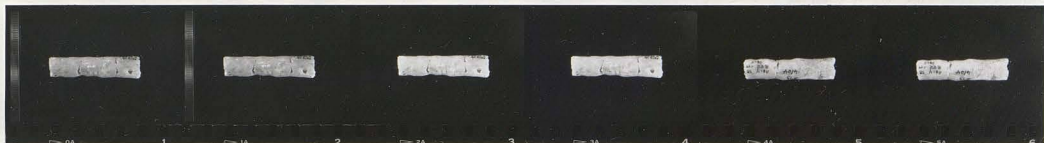
R Xb. A14 -

R 1xc. A14 + R Xc. A13.1236. belemnite -



R VII. C6 -

58. R VIIb. B11.4060 + 58 n° + R VI. C10.



58. R VIIb. B11 + D13.4104 + C11.6148. belemnite



R VI. D12 562. "Revolucion"

R VIII. A11.6648. ε gauche Ous -



R VIII. A11.6648. ε gauche Ous -

63. R Xb2. B11.3175

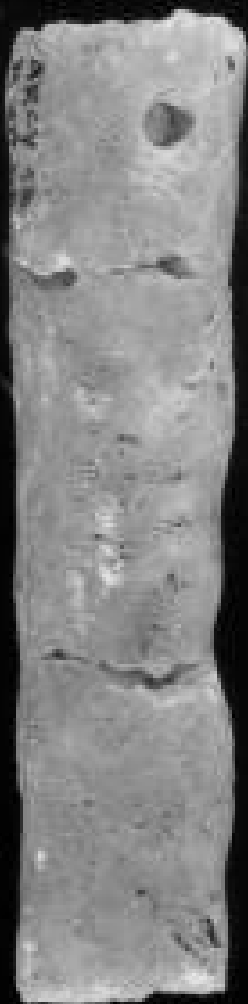


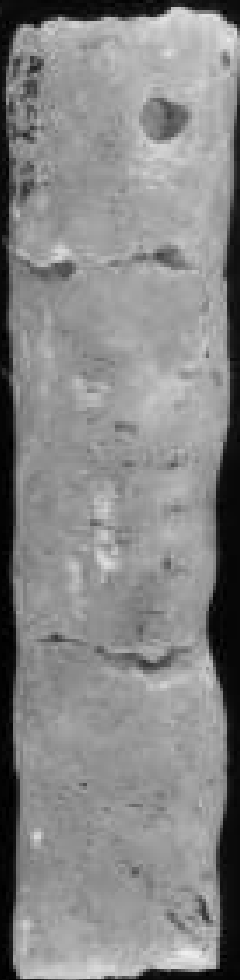
63. R Xb2. B11.3175

R Xc. 211. I, gauche Ous.

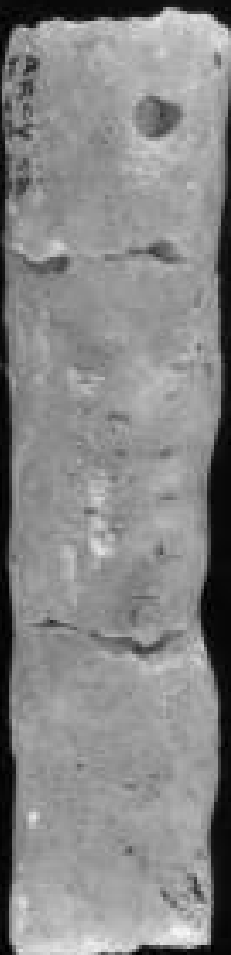


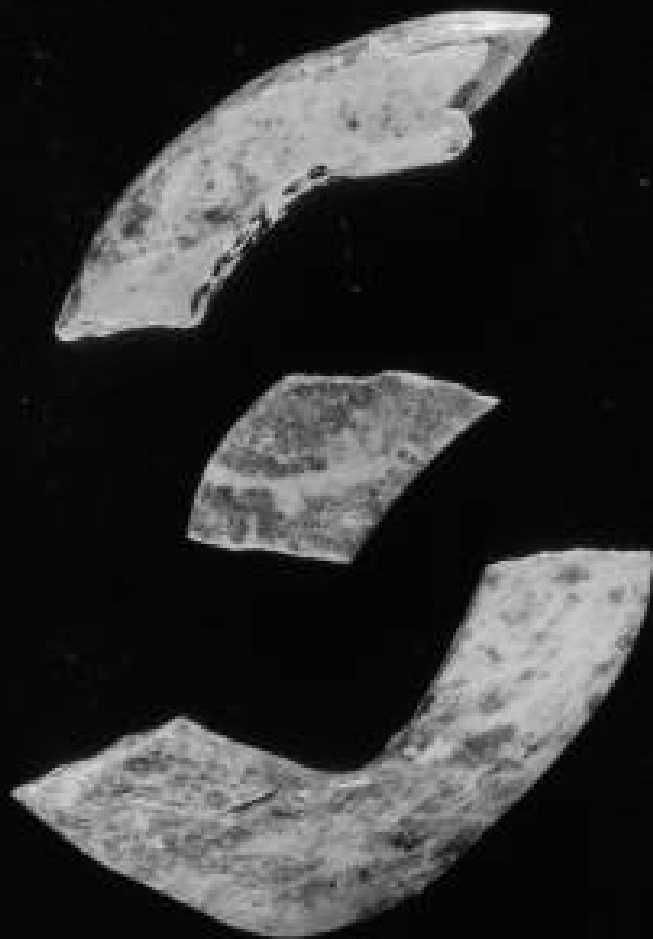










































ARCY 88
RUE CH
PAGE

213
4/04

ARCY 88
RUE DE
SUD

13
4104







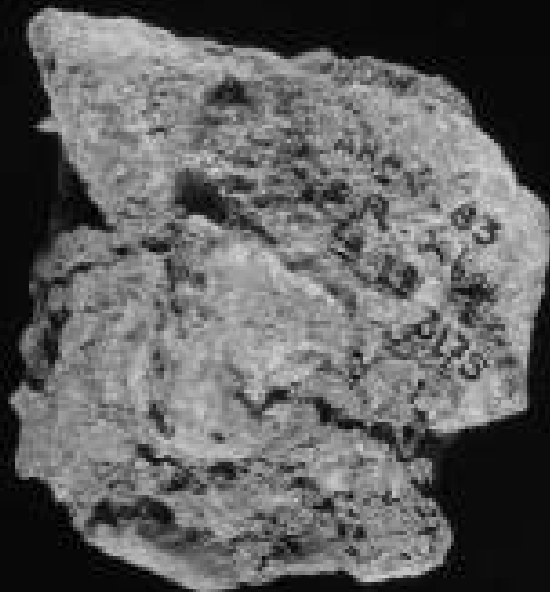


















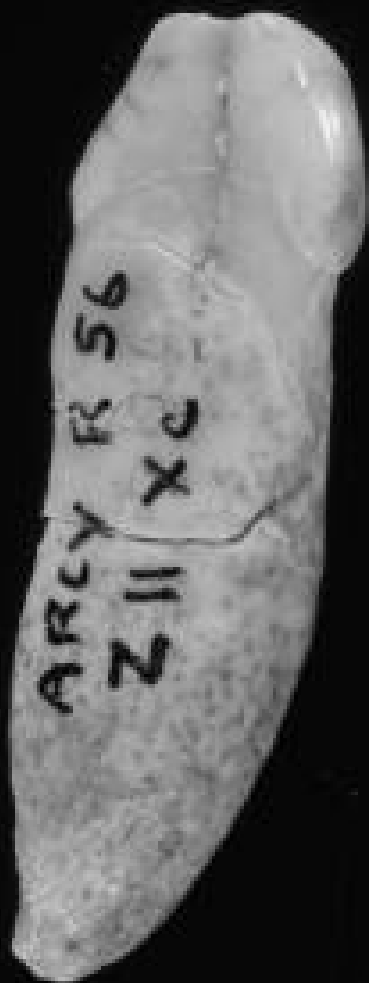








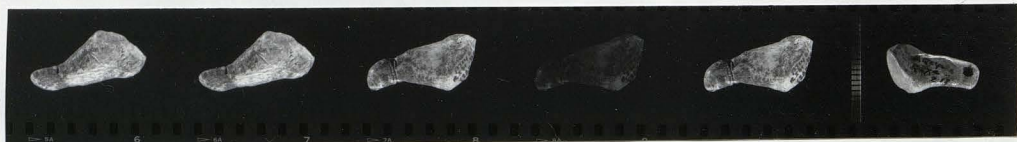






A x a. A11. 3805. Mammote. Incisive sup.

R x b. B8. (285)



R x b. B8 (285) - Remu. doigt résiduel postérieur droit -

R x a. 213.



R x a. 213. Remu. Doigt résiduel. postérieur gauche -



R VII. D11. 167 - I' sup. gauche. Cheval -

R VIII. D11. 167 -



58. R VIII. C6. 448. C. droite Hyène

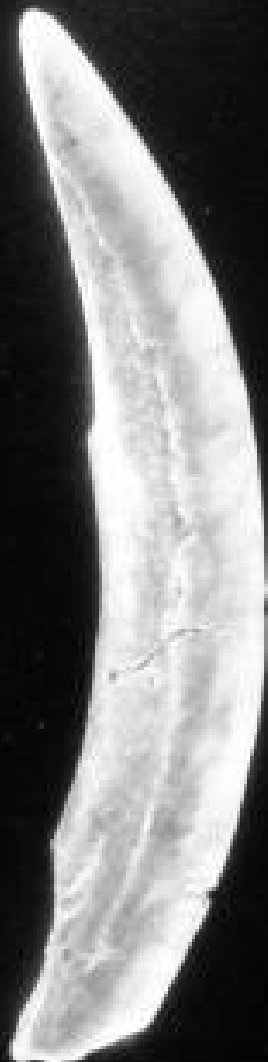


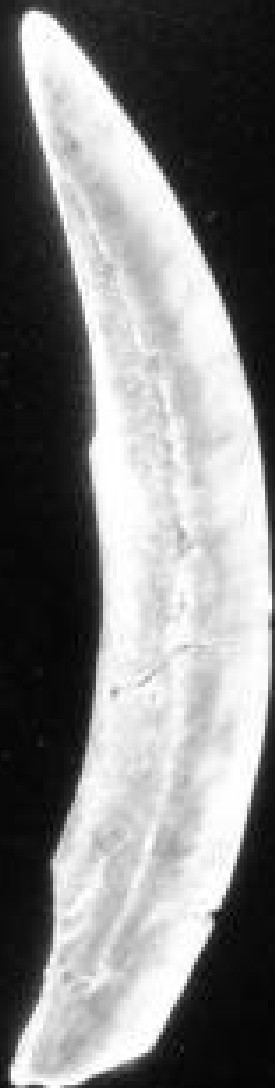
58. R VIII. C6. 448. C. droite Hyène -



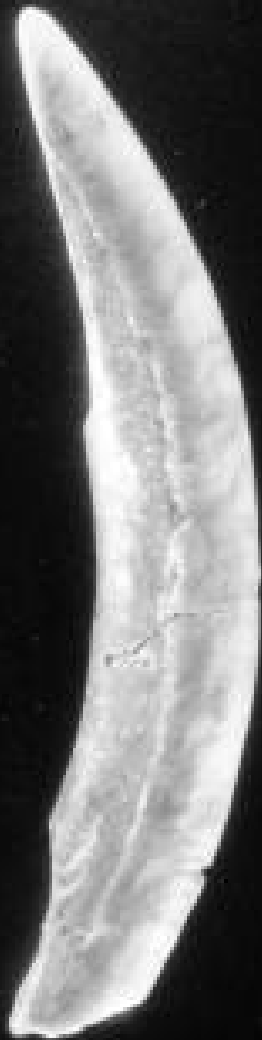
R VII. C11. 6152. I. droite ours.

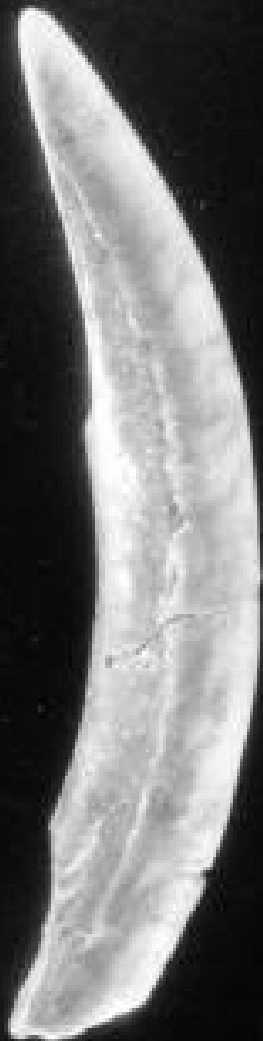
R x b. A8 - I' droite ours.



































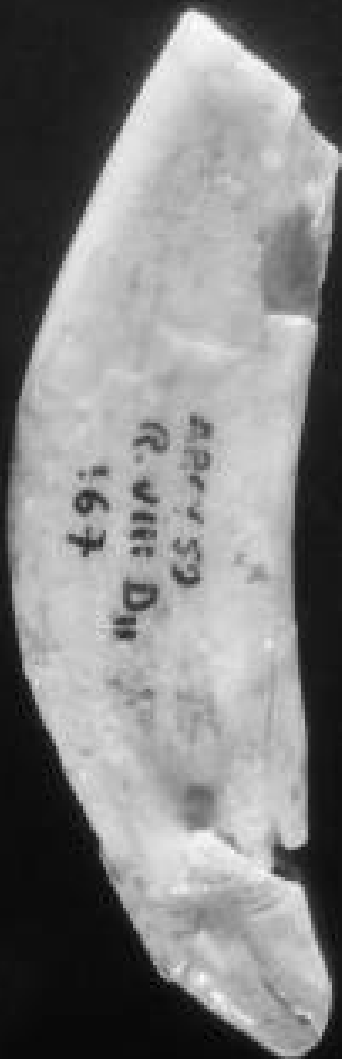




ANCIEN
R. VIII: D
167



ABY 59
R. VIII DII
167







































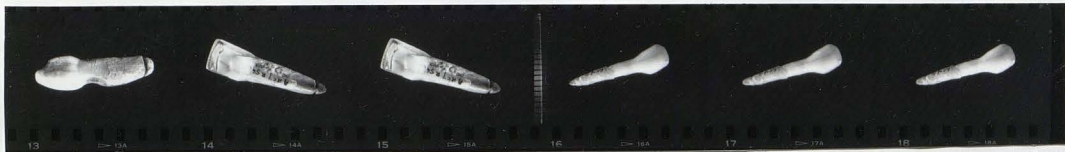






R X b. A 6. I¹ desirous -

R X c. A 2 II. 557 ou 557? I, D. Bism

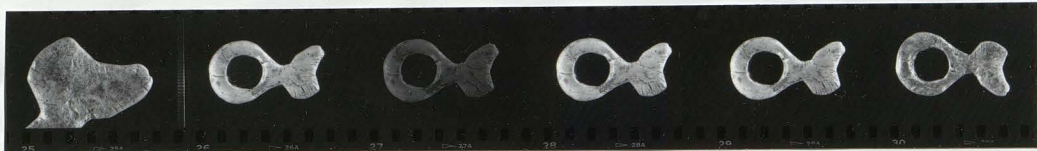


R X e. A 2 II. 557 ou 557. I, D. Bism. R X b 2. C 12. 209. I₂ D. Reume



R X b 2. C 12. 209. I₂ D. Reume -

R VII. base de la pendeloque -



R VII. Pendeloque



R VII. Pendeloque -

R X a. A II. 3805 - heurtoir. Densive sup -



A l'entree : R X a. D 8. Renaud C droite -



R X a. D 8. Renaud. C droite - R X b. D 8. Renaud C droite - 58. R VII. D 8. Renaud C gauche

























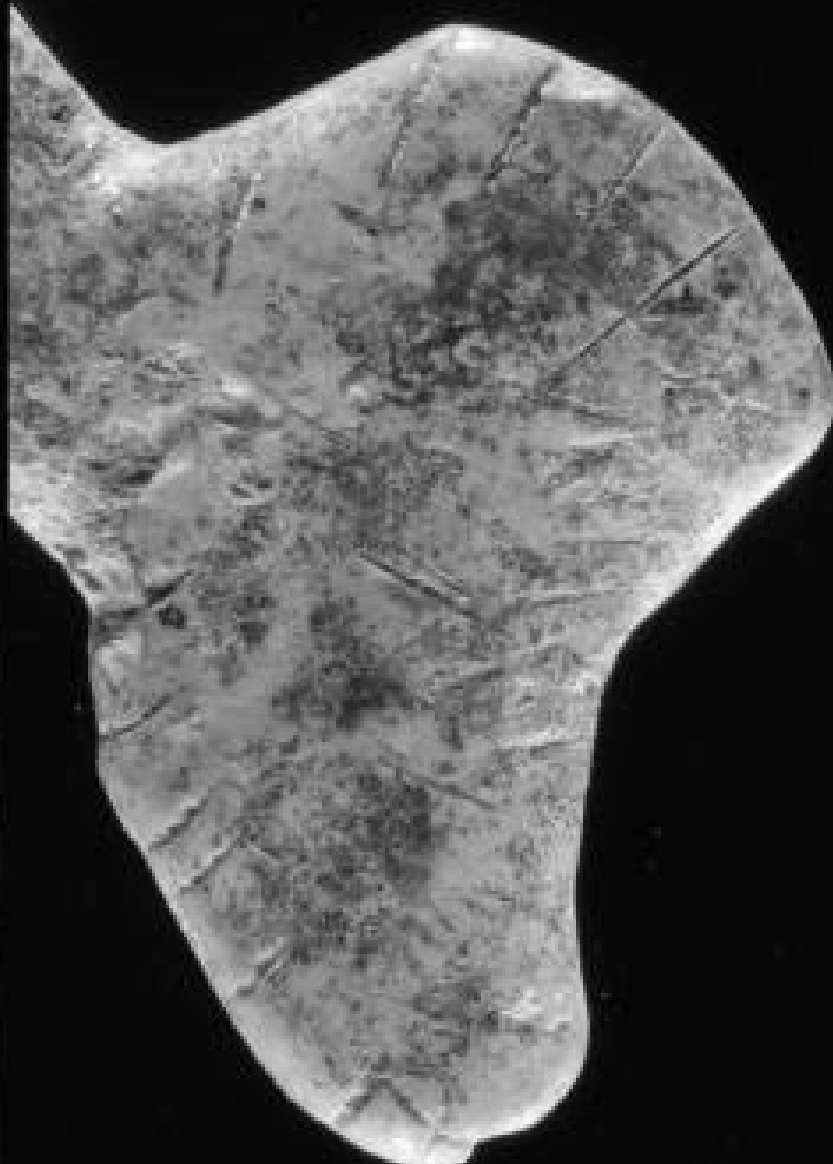












































Rviii 29
Rviii 28

RV 111 29
RV 111 29

16



R V. E7.



R V. E7. Cochs de ceuf.



R V. E7. Cochs de ceuf.

58. R Xb . Y13. 3893. Ryndonville



58. R Xb - Y13. 3893. Ryndonville -

58. R VII . XII - pendeloque en pierre



R VII . XII -

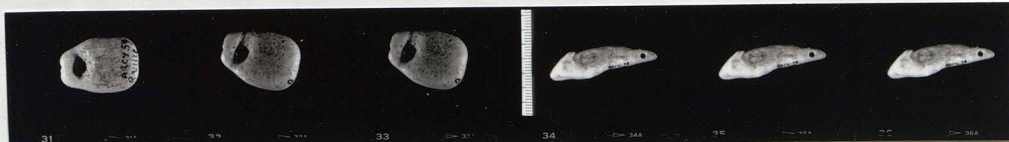
58. R VII . XII -

58. R VIII - Y10 -



R VIII . Y10. pendeloque en pierre -

58. R VIII



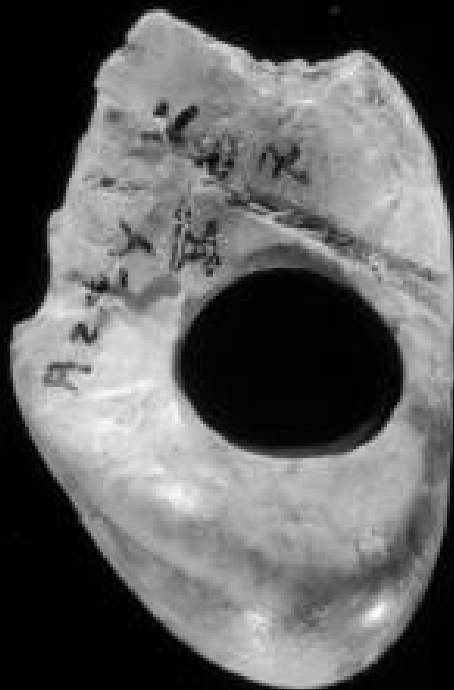
R VIII . cu. 6152 I droite ours.



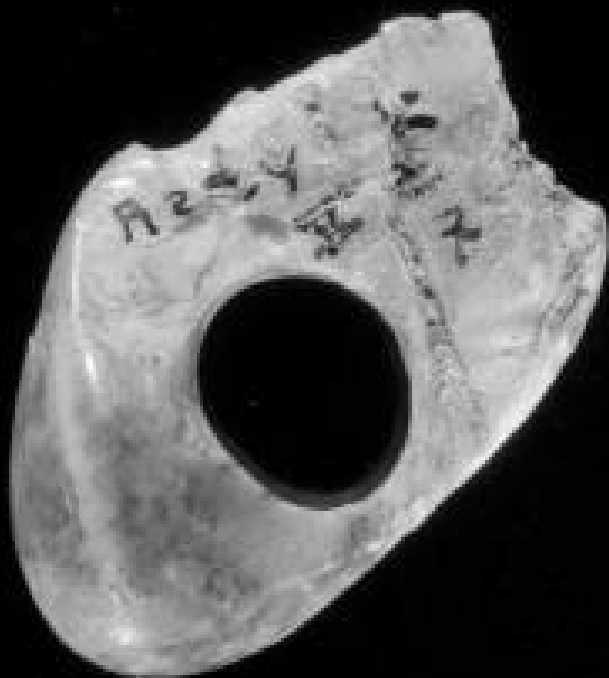


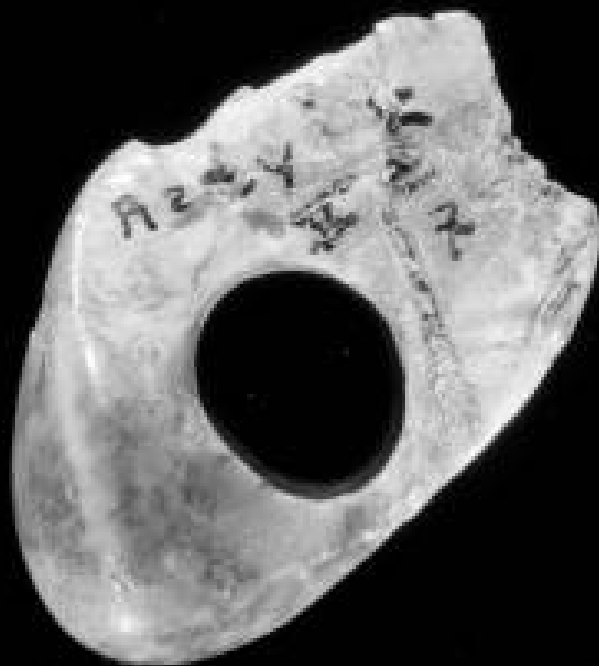


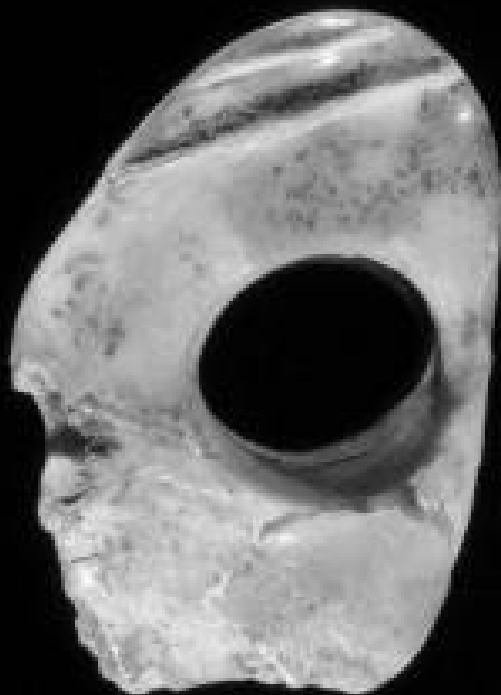




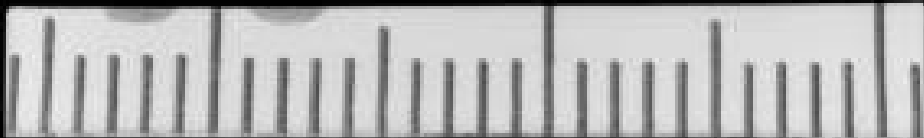
































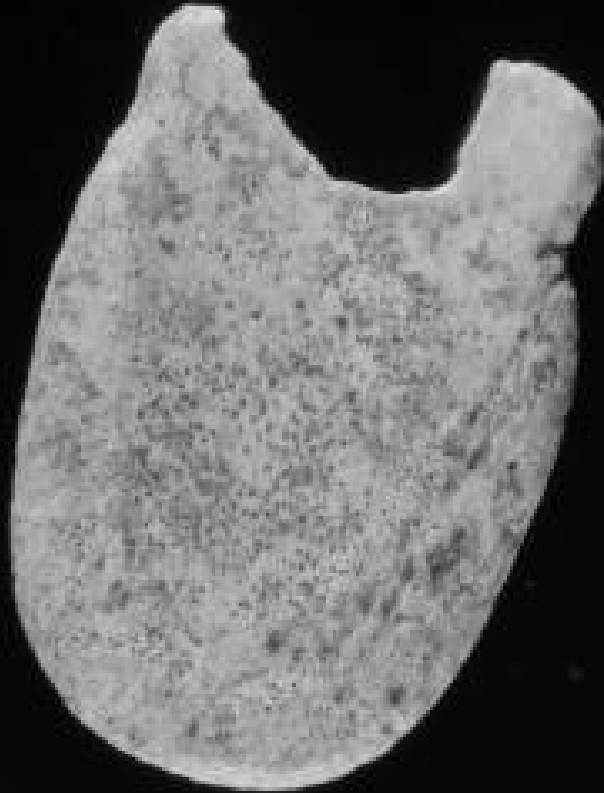


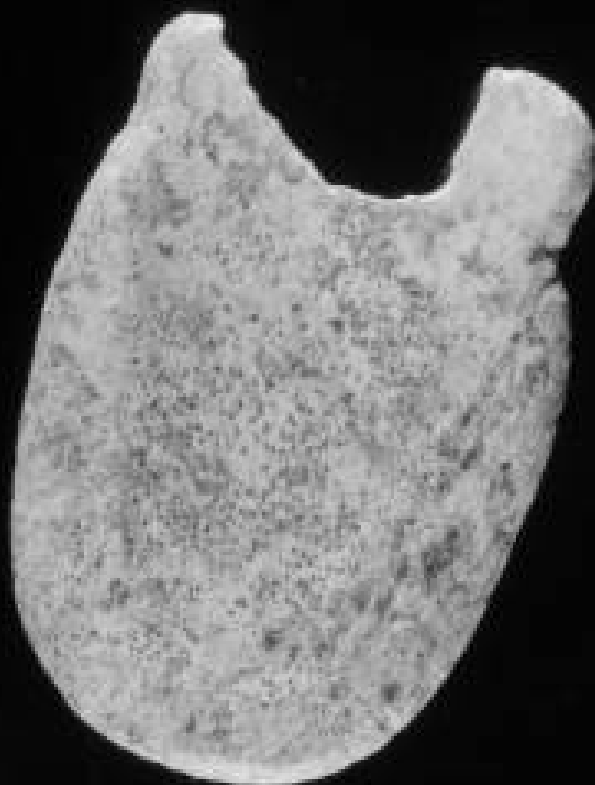






























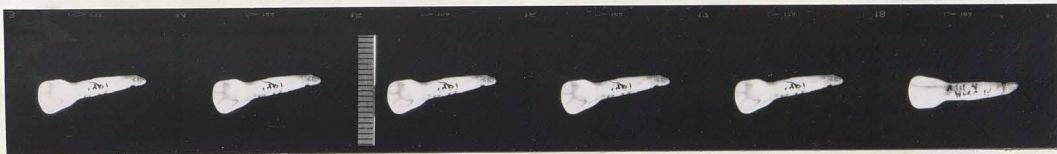
(R) A. L'enhés



R VIII . DS \subseteq poche Renaud

Arg 58. R VIII . DS . \subseteq poche Renaud

R VIII a. B13(46)



R VIII a. B13(46) - I, droite. Renaud



R VIII a. B13(46) - 58. R VIII b. B11. 4060. Fragment de pendeloque



R Xb - X12 - 3081 - Fragment de pendeloque

R Xb. Y11



R Xb. Y11. Fragment de pendeloque



R VIII . B5

56. R Xc. A11. 1...75



56. R Xc. A11. 1...75

R Xc . B5 . 1021

REV 1919
REV 1919

RV 111 29
RV 111 28



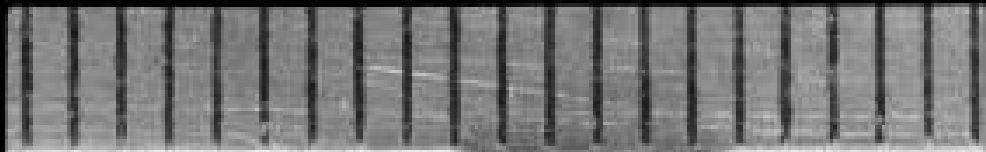




















ARCY 58
Ryib
B 11
F 068

TOGAS
R
VI
A
R
Y
S
B
B
11

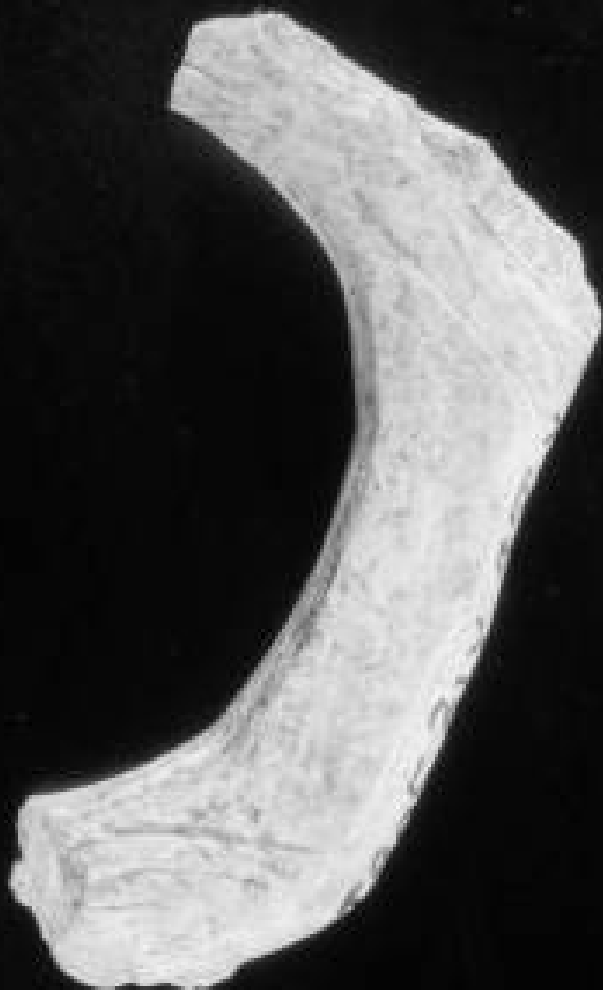
Handwritten text on a fragment of a document, oriented vertically. The text is written in a cursive script and includes the following characters and symbols:

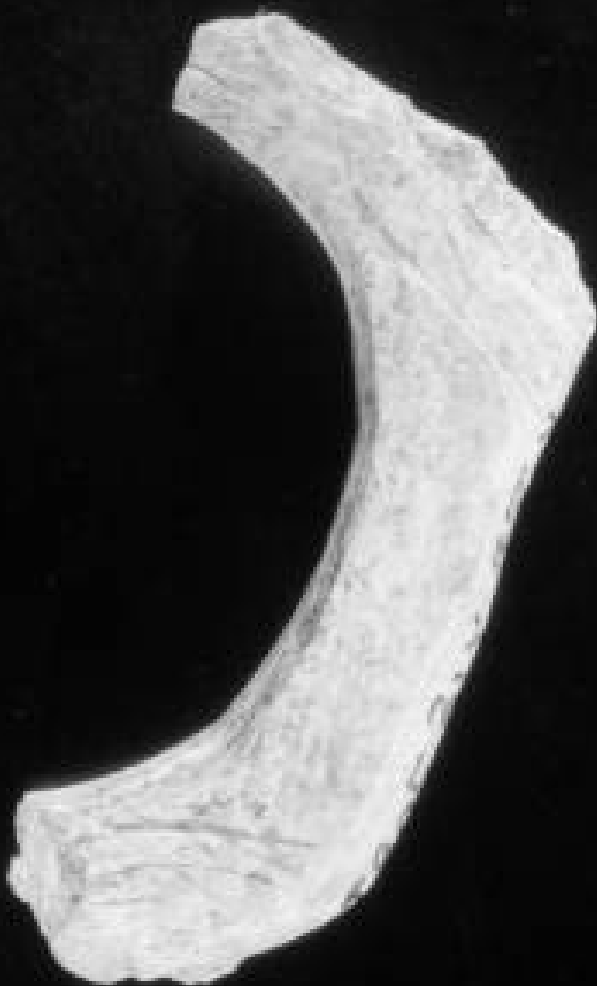
TOGAS
A R B Y S B
R Y I I B
B //









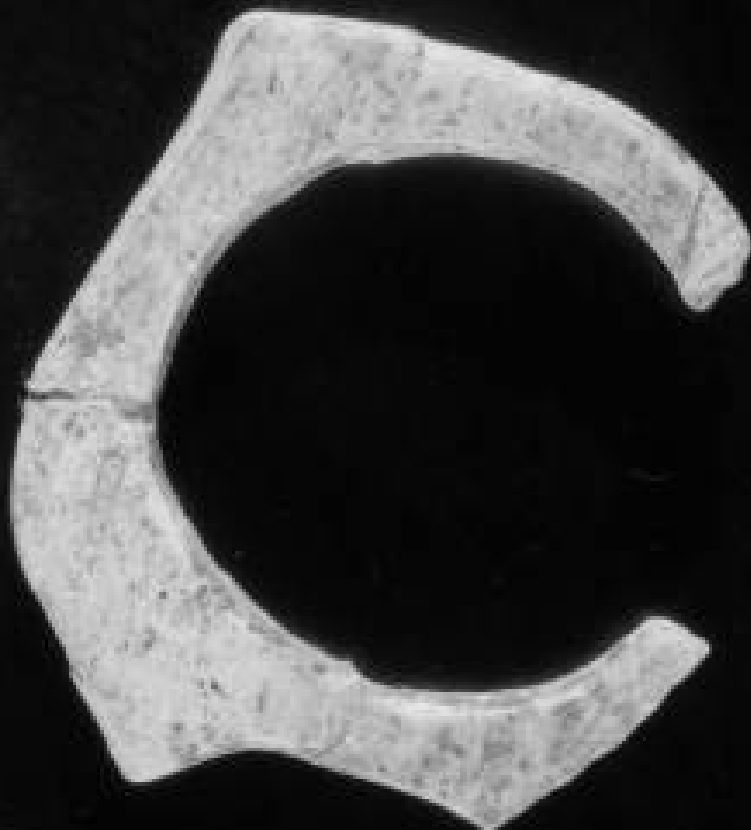












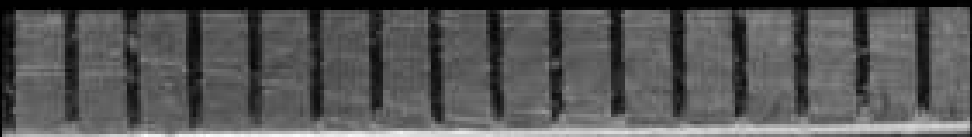








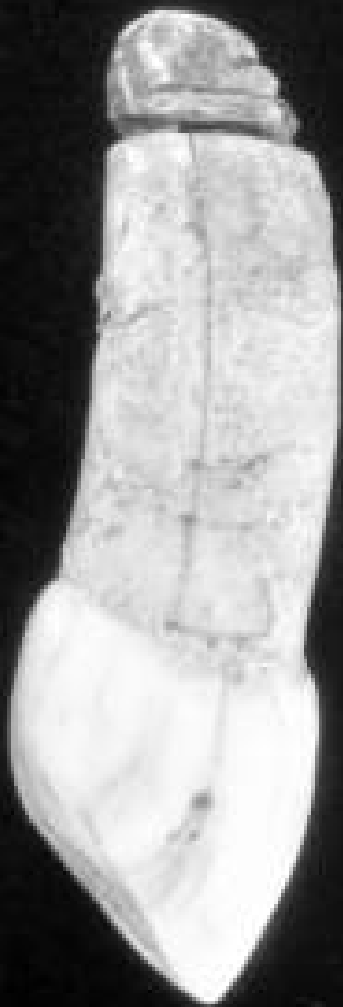


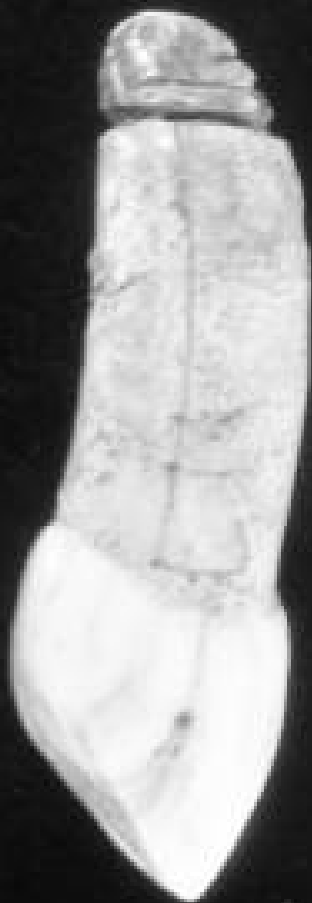


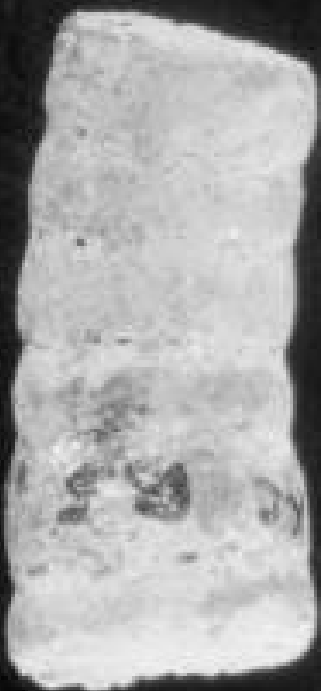
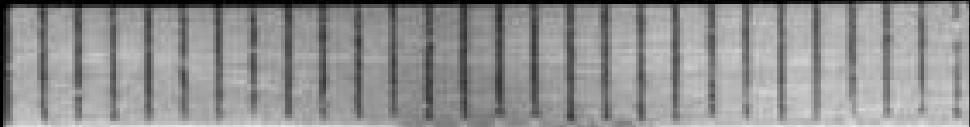


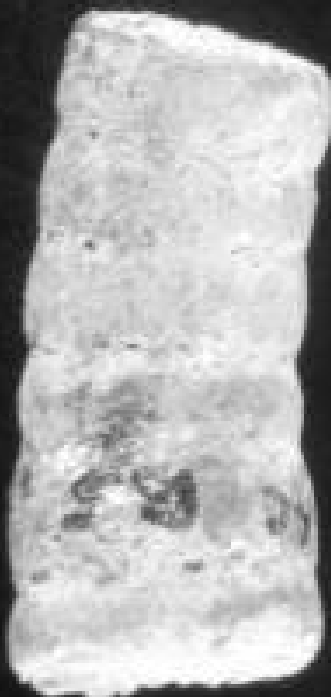
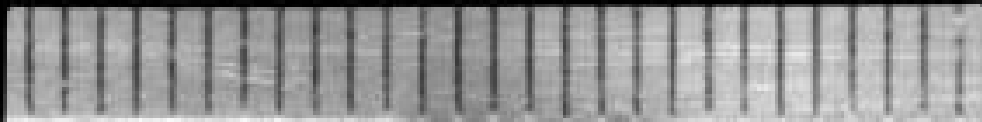


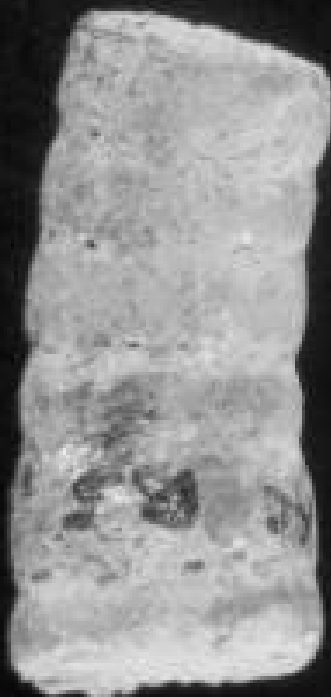


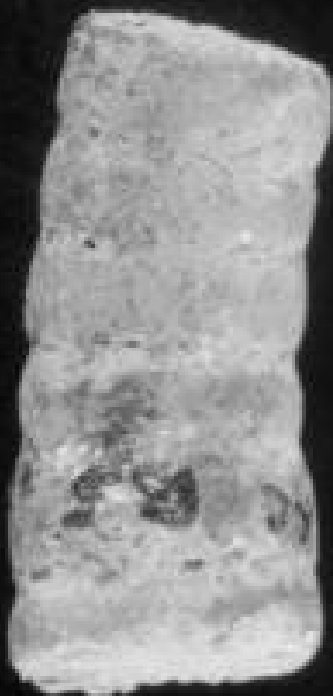








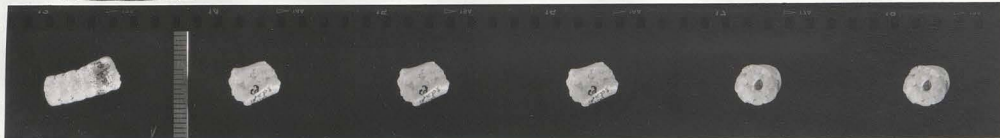






Tire à l'emera

13



Rxe.B5.1021.

Rxb2.CB



Rxb2.CB -

R13a.Y13. Reune. drift v. ind. hor. c.



R13a.Y13. Reune. drift v. ind. hor. fauche -

R13c.212 (131). Reune. I, Suisse -



R13c.212 (131). Reune

R13a.D8. Reune c Suisse



Rx.214.16 ou (86). c inf. fauche Reune -

R13a.C7.3536 -



53. Rx.L.C7.3536 -

R13e.C7.(13)



Rxe.C7.(13) c inf. D reune -

R13.Y3 -





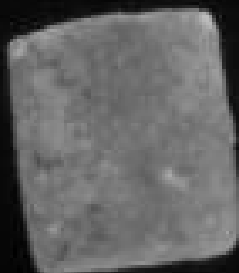


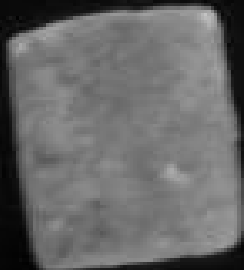


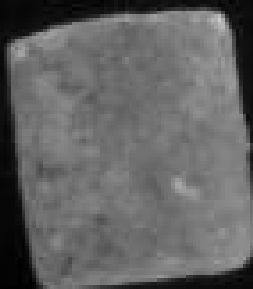


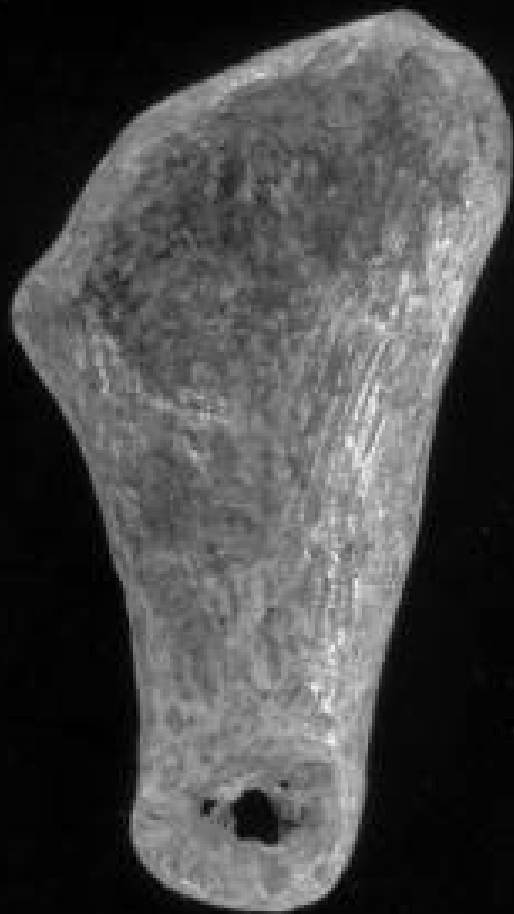


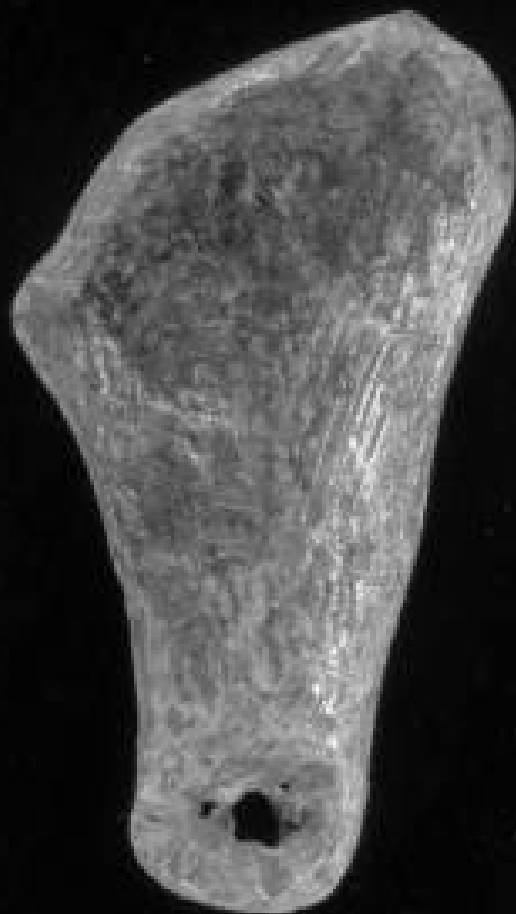


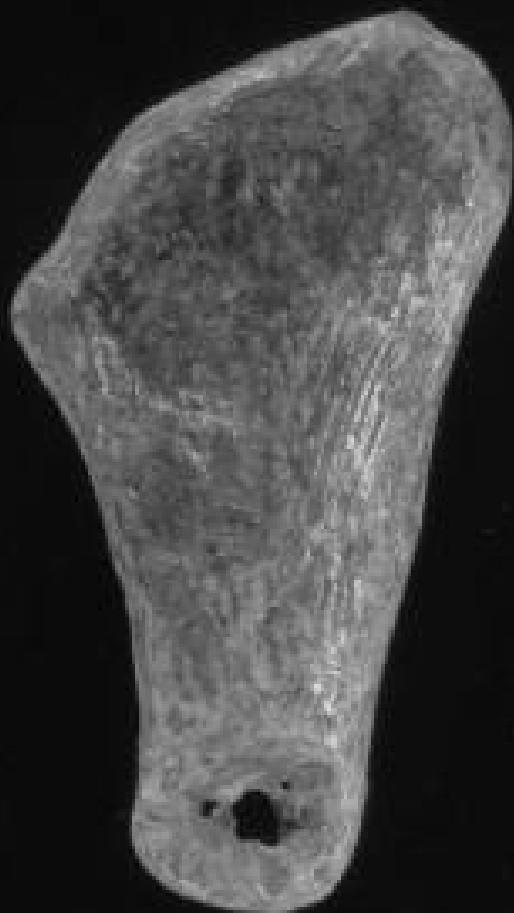
























17000-1111
C





































Amy R
X.C.F. (19)

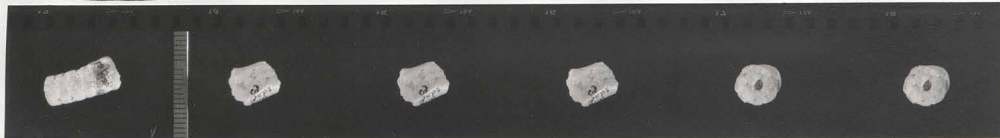
Avery R
Xc. 67 (19)





Tire à l'emera

13



Rxe.B5.1021.

Rxb2.CB



Rxb2.CB -

R13a.Y13. Reune. drift v. visuel
hor. c.



R13a.Y13. Reune. drift v. visuel. hor. gauche -

R13c.212 (131). Reune. I, droite -



R13c.212 (131). Reune

R13a.D8. Reune. c. droite



Rx.214.16 ou (86). c. inf. gauche Reune -

R13a.C7.3536 -



53. Rx.c7.3536 -

R13c.C7.(13)



Rxc.C7.(13) c. inf. D reune -

R13.Y3 -





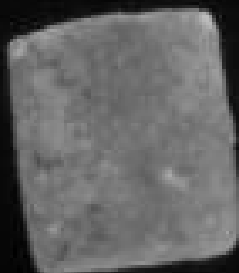


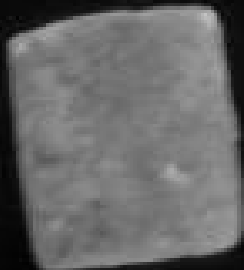


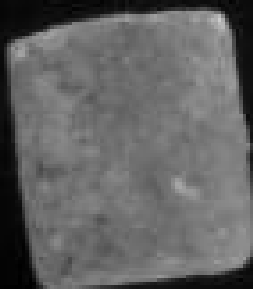


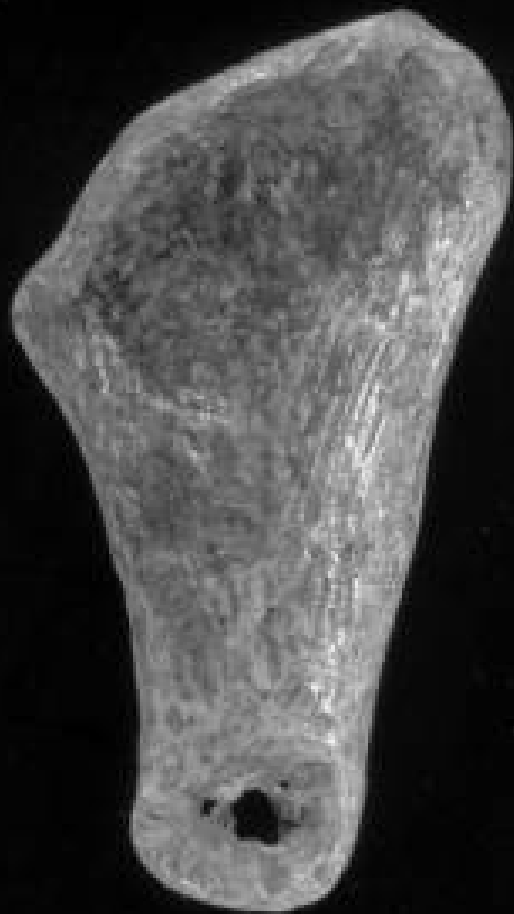


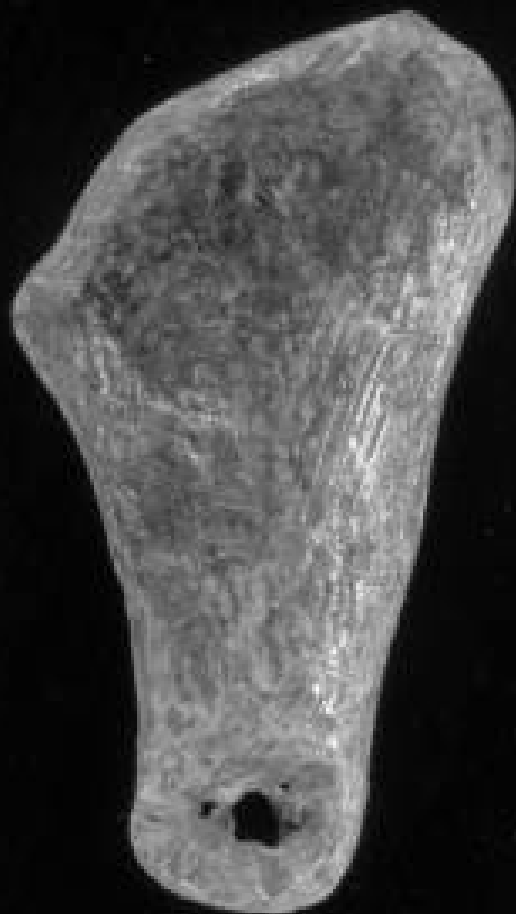


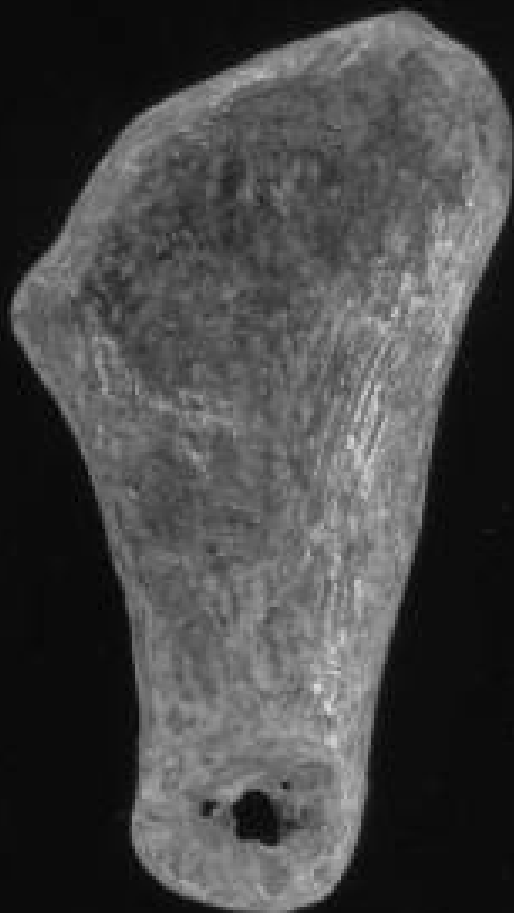
























17000. RIX
C





















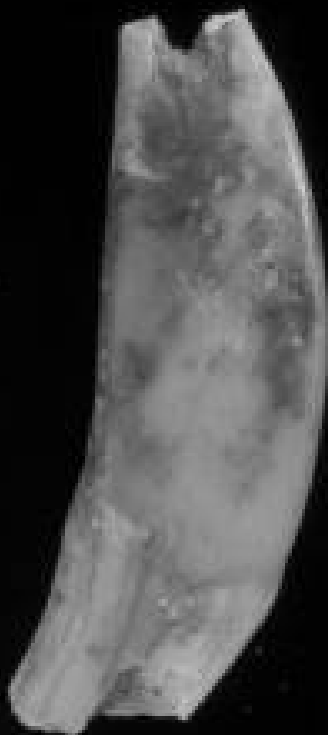




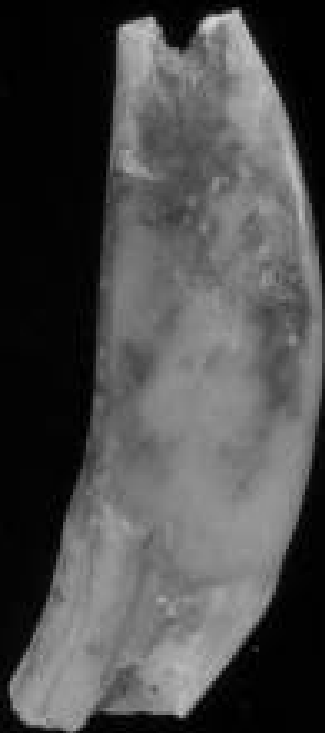






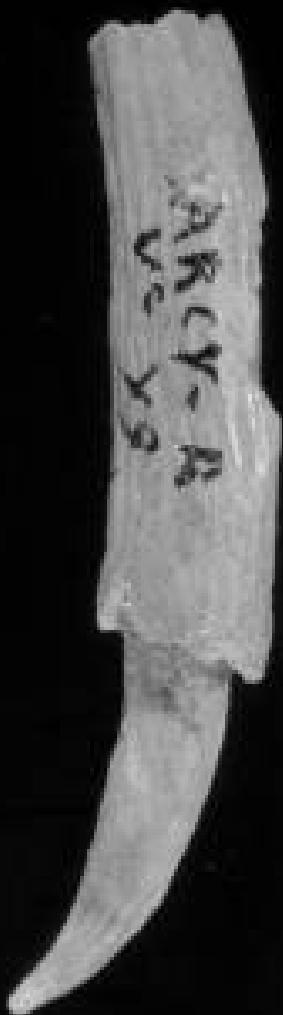






Amy R
X.C.F. (19)

Avery R
Xc. 67 (19)







S. D. Ouseau - Argy Trilobite Ss provensane - E. front. recond



Ss provensane Ss provensane Ss provensane -



Argy - Trilobite



Argy. Trilobite.



Argy. Fées



Argy. Fées - R. x b. A. G. 454



A. VII. D. B. 4460 -

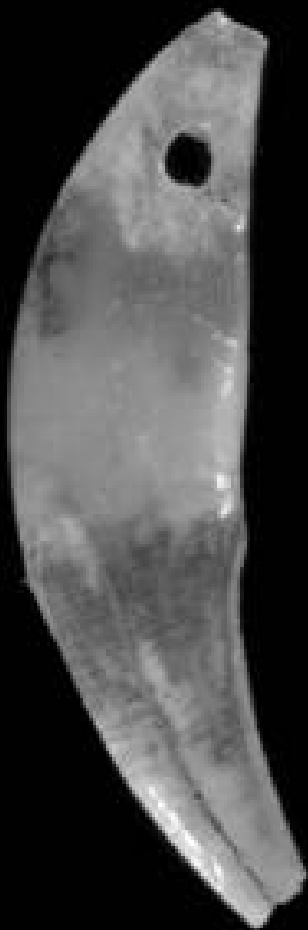
S. R. VII. C. 6.















































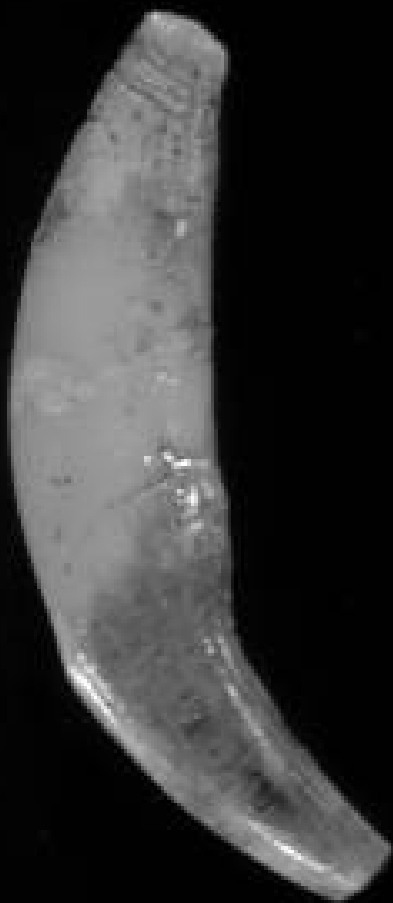








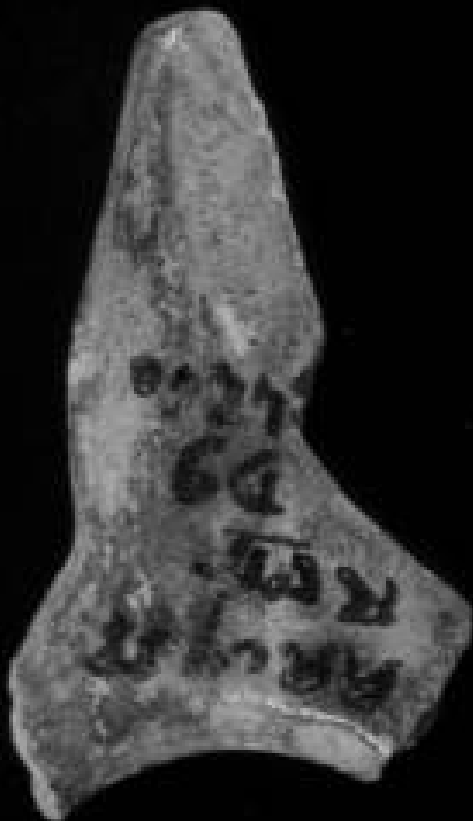




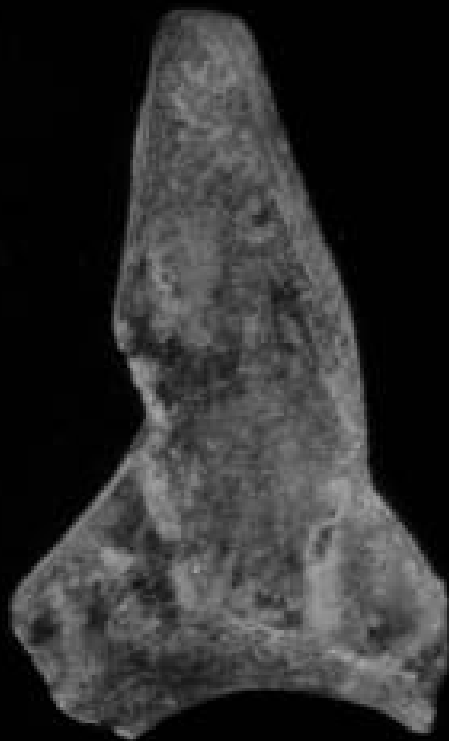








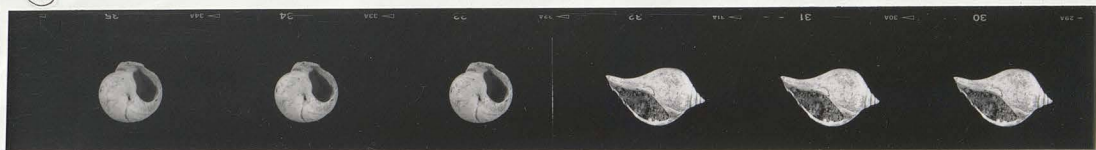








92



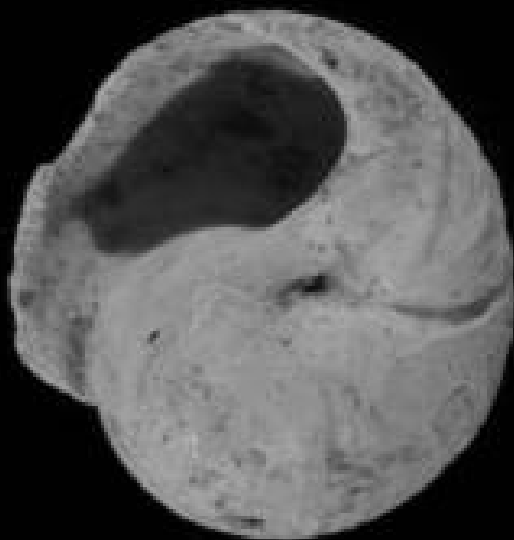
58.R VI. C6. *Conium ind.* .

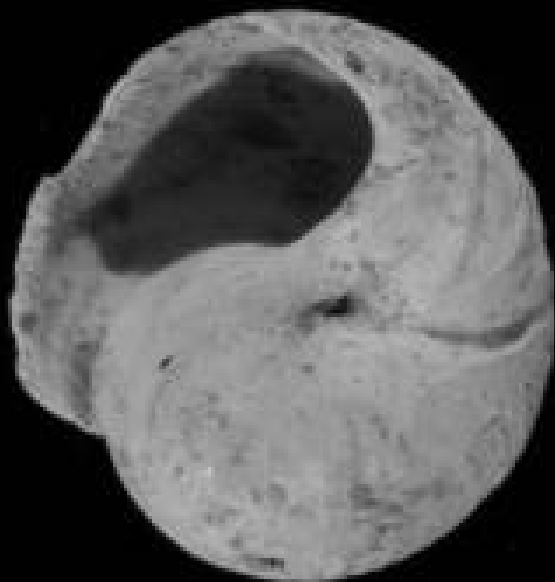
R V. *Sycostoma* -

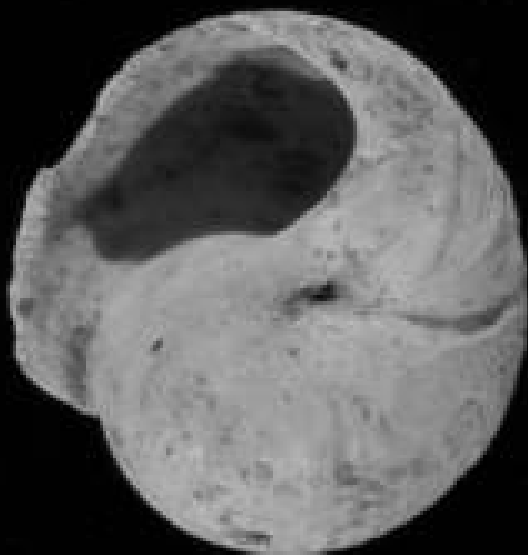
















Archives de la Maison Archéologie & Ethnologie René-Gisoulin.
TOUS DROITS RESERVES. Reproduction strictement réservée à un usage privé.



Archives de la Maison Archéologie & Ethnologie René-Gisbert
TOUTS DROITS RÉSERVÉS. Reproduction strictement réservée à un usage privé.







Arbeits Nr. 9 Messer, Axtschuppe & Steinbeil Fundstücke
POL 10 2002/12 48 247/10-2. Reproduction interdite sans autorisation














Сделано в России. Производство и продажа строительных материалов.
Тел: +7 (343) 262-11-11. Адрес: г. Екатеринбург, ул. Малышева, 100.



© 2000 by the Authors. All rights reserved. No part of this publication may be reproduced, stored in a retrieval system, or transmitted, in any form or by any means, electronic, mechanical, photocopying, recording, or by any information storage and retrieval system, without the prior written permission of the copyright owner.

A black and white photograph of an archaeological excavation site. The ground is uneven and appears to be a mix of soil and rock. A person, wearing dark shorts and a dark shirt, is standing on the right side of the frame, leaning forward. A long, thin metal scale or ruler is placed on the ground in the middle ground. In the foreground, there is a large, light-colored, irregularly shaped object, possibly a piece of pottery or a stone. The overall scene suggests an active archaeological dig.

Archives de la Mission Archéologique à El-Amarna (Égypte Ancienne)
TOUTES LES DROITES RÉSERVÉES. Toute réimpression ou utilisation non autorisée sans la permission écrite de la Mission est formellement interdite.



Archives de la Mission Archéologique à El-Amarna, Egypte - Coucouche
TOUTS DROITS RÉSERVÉS. Reproduction strictement interdite à un usage privé.



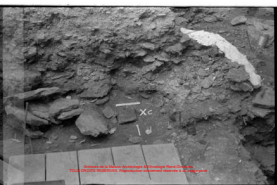
*Archives de la Mission Archéologique et Ethnologique de la Guyane
FRANÇOIS-LOUIS HENRI HALLÉ. Photographies réalisées entre 1950 et 1960.*



Archaeological Excavation of the Roman Forum
© 2010 by the American Archaeological Society. All rights reserved.




Archives de la Mission Archéologique à l'Étranger de l'Université
TOUS DROITS RÉSERVÉS. Reproduction strictement autorisée à un usage privé.



Archives de la Maison Archéologie & Ethnologie Paris-Sorbonne
TOUTS DROITS RÉSERVÉS. Reproduction strictement autorisée à usage privé



Ecole de la Maison Archéologie & Ethnologie René Croizot
Tous droits réservés. Reproduction strictement réservée à un usage privé.



Archives de la Mission Archéologique à El-Fayoum (1964-1965)
TOUTS DROITS RÉSERVÉS. Reproduction interdite sans autorisation écrite.



Produced by the Marine, Airborne & Inshore Force Command
FORN DISSEM: NO DISSEM. Reproduction prohibited without prior approval.



Arbeitsplan der Maßnahme: Anfertigen des Estrichs
100% DER ARBEIT VORGEHT (Reproduktion struktureller Elemente & einstrage plan)

Aspirin and its active ingredient, **Acetylsalicylic Acid**, is a **NSAID** (Non-Steroidal Anti-Inflammatory Drug) used to relieve pain, reduce inflammation, and lower fever.



Espresso da **la** **Telecom** **SpA** **gruppo** **di** **Il** **Gruppo** **SpA** **Consorzio**
TELECOM CREDITO ITALIANO **Espresso** **gruppo** **consorzio** **di** **un** **gruppo** **per**



Arbeitsplan für Betonarbeiten & Estricharbeiten
1:100 (1:50) (1:20) (1:10) (1:5) (1:2) (1:1) (1:0,5) (1:0,2) (1:0,1)