

37

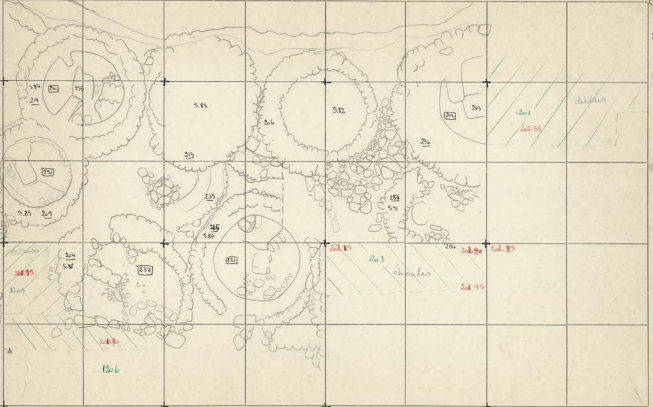
36

35

34

25

24



KIMOKUITA 80



7.18 / 7 / 80

200.25

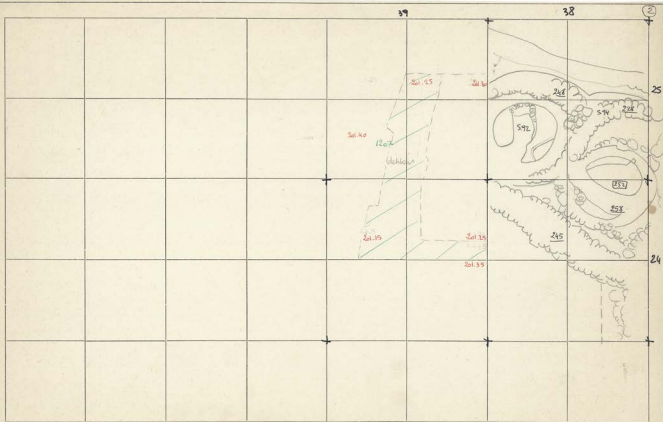
201.40
204.30

1204

détail



No 2 : détail Piton



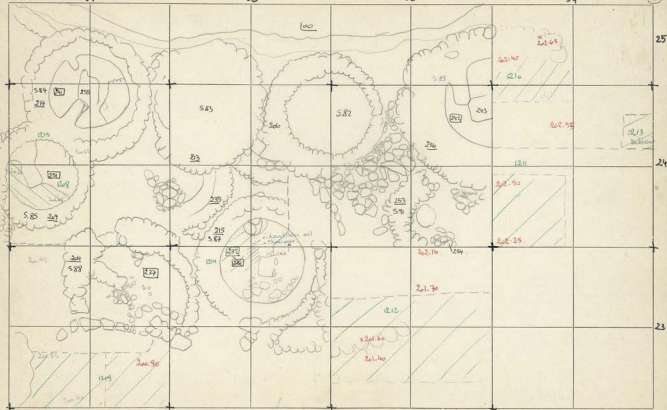
37

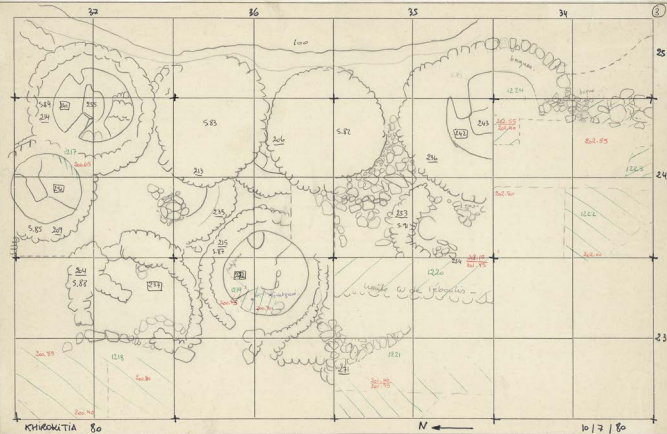
36

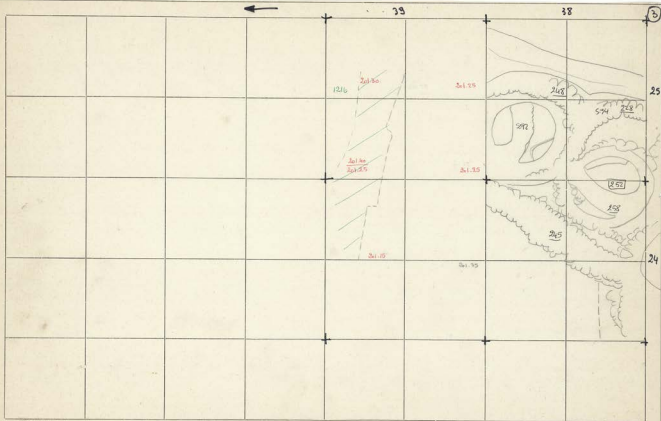
35

34

2

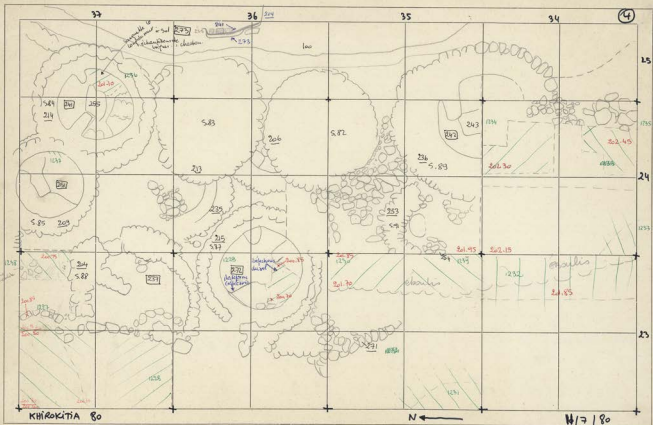






Khirokitia 80

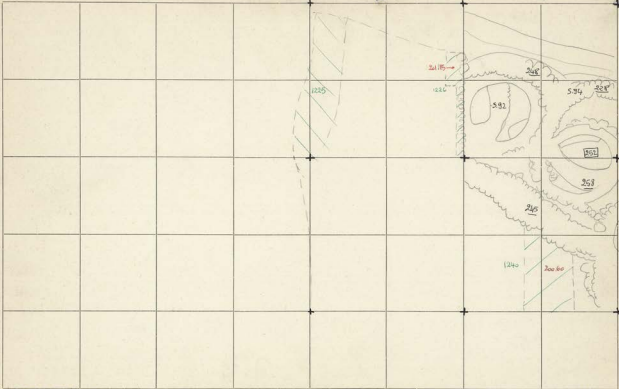
10/7/80



35

38

4



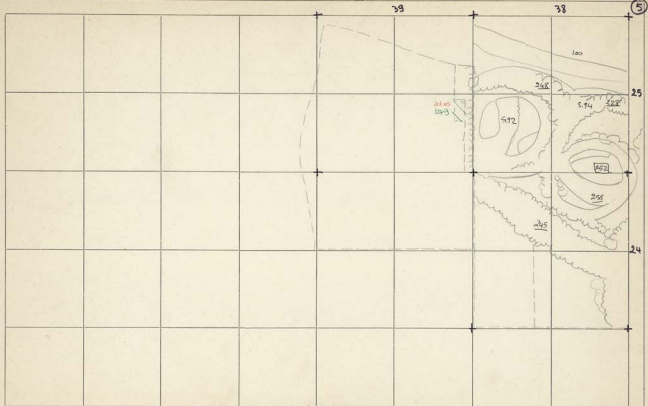
25

24

KHĒROKITIA 80



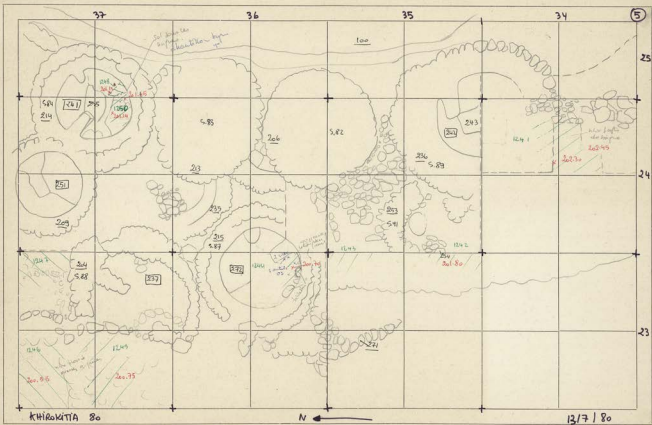
11/7/80

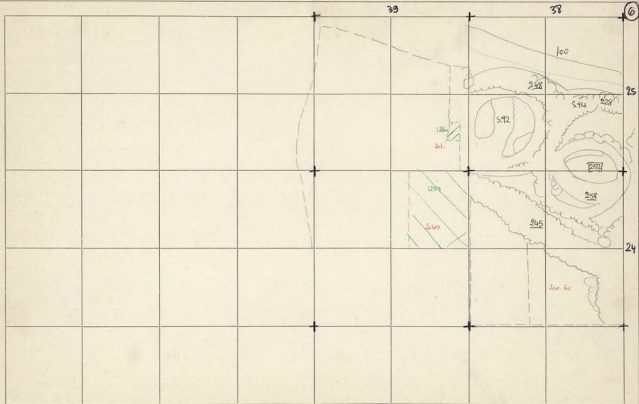


KHIROKITIA 80

N ←

13/7/80

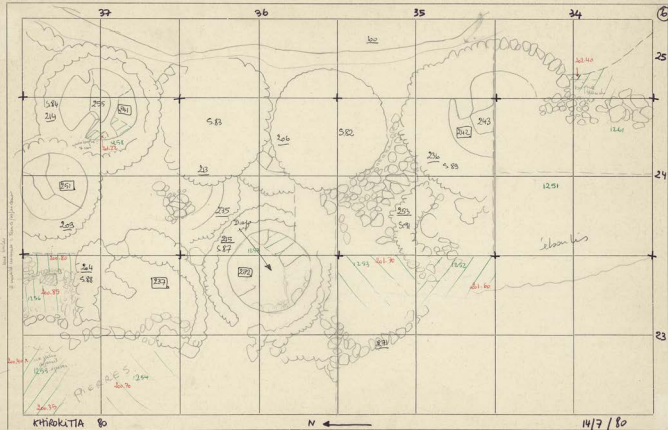




KHIROKITIA

N ←

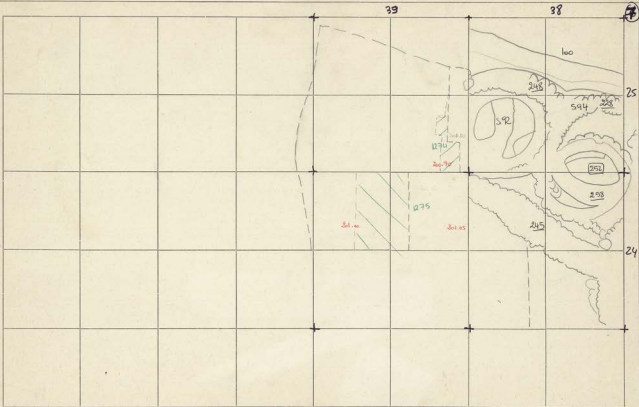
14/7/80



KHIROKITIA 80

N ←

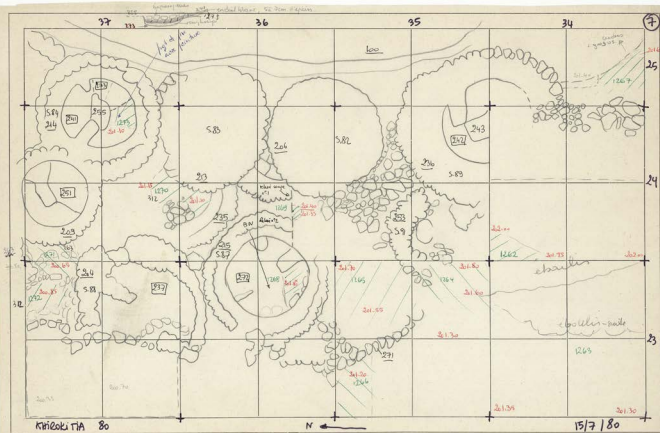
14/7/80

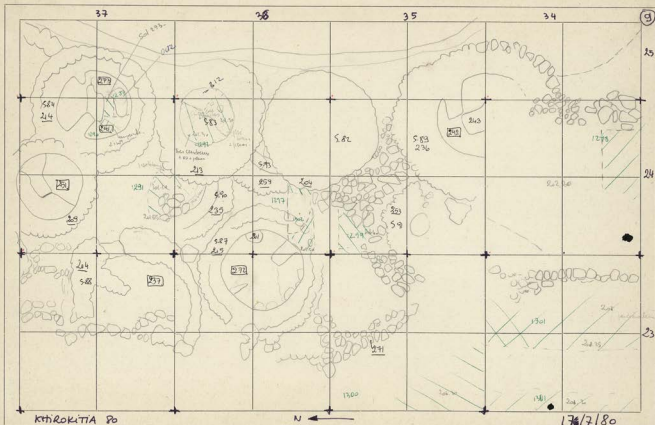


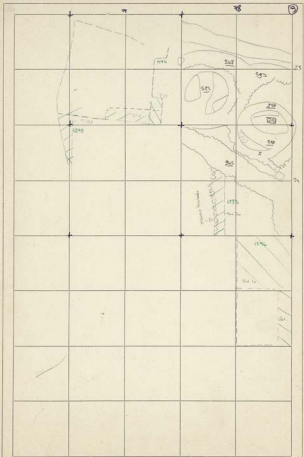
Khlokitia



5/7/80



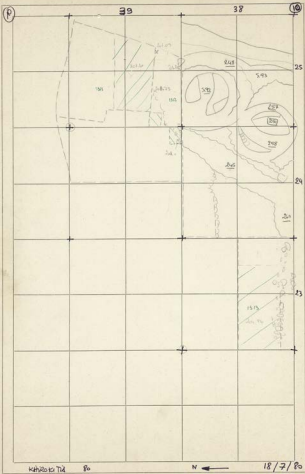




KHAKOITA

17-7-20

17-7-20

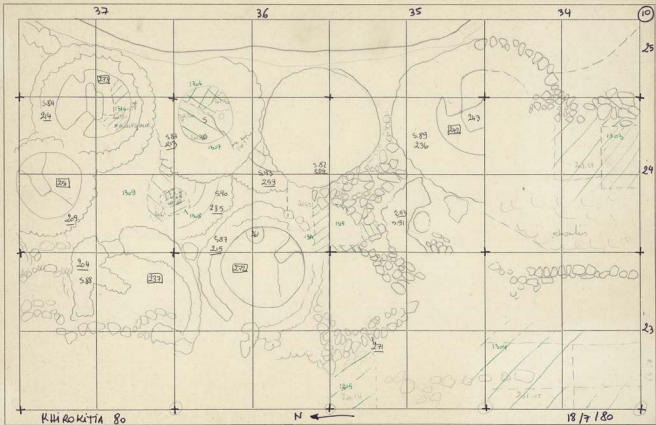


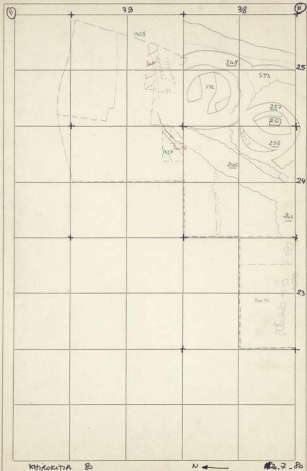
Katharata Tid

80

N ←

18/7/80

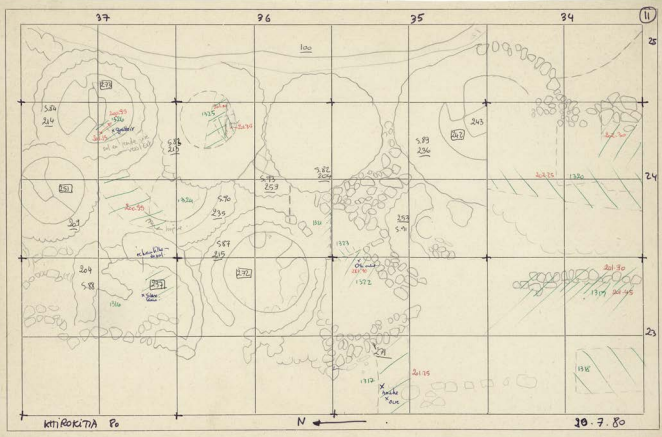


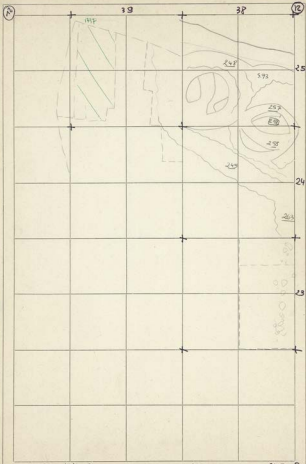


M. K. 7. 80

N ←

M. K. 7. 80

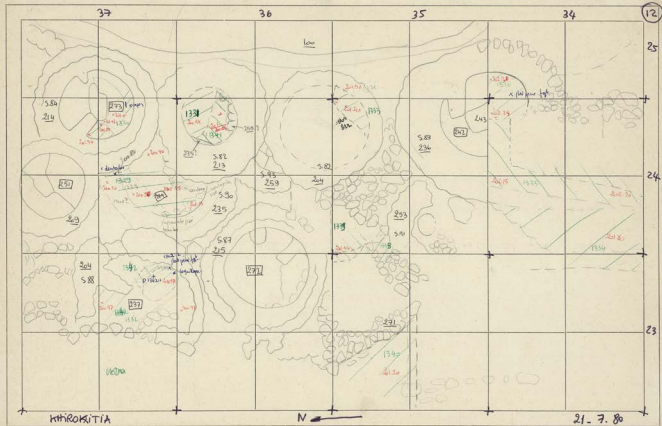


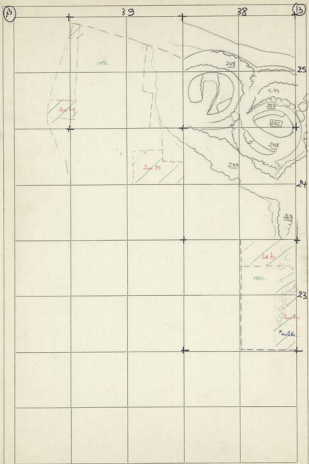


Κηφισοτάρια 30

N ←

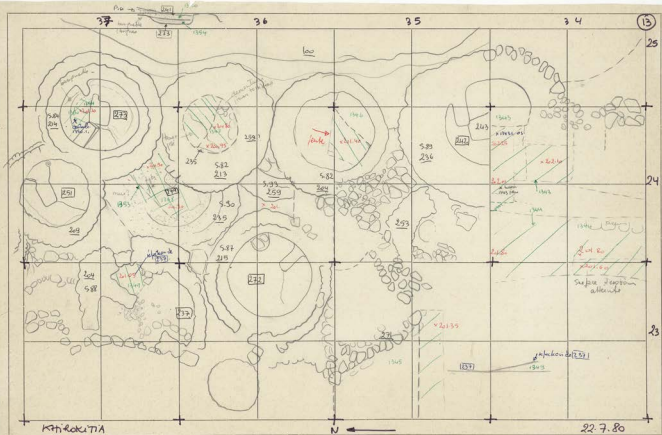
21.7.80

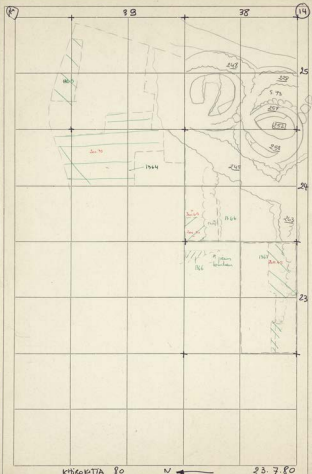




KITHAKITIA fo

22. 7. fo

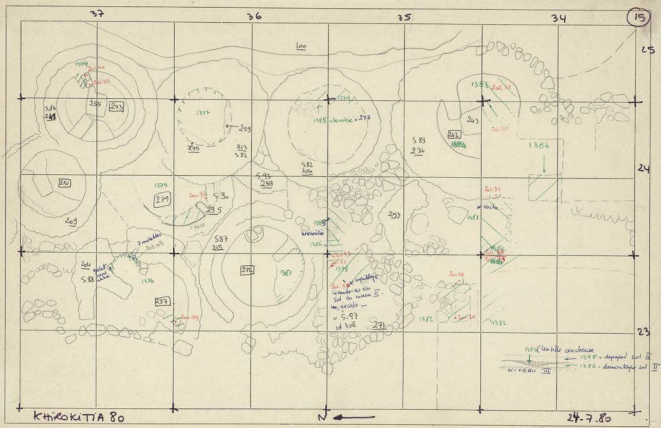




KHIKONTIA 90



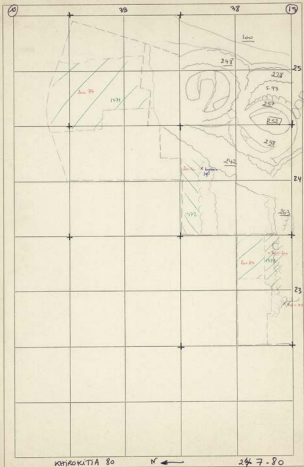
23.7.80



KHROKITIA 80



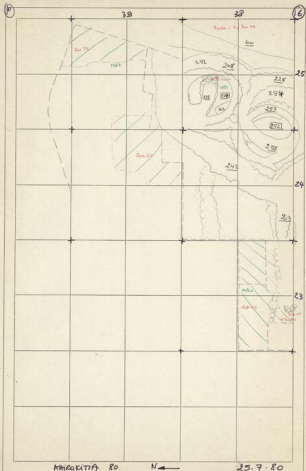
24-7-80

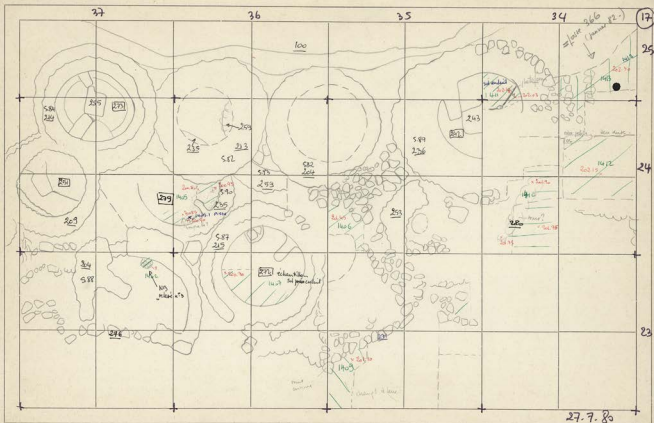


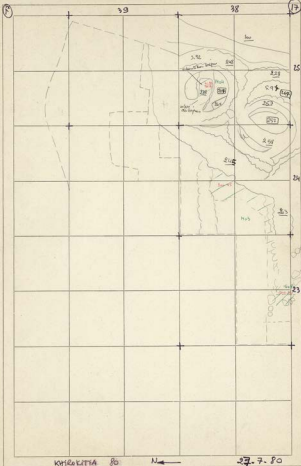
KOTIAKUTIA 80

N ←

247-80



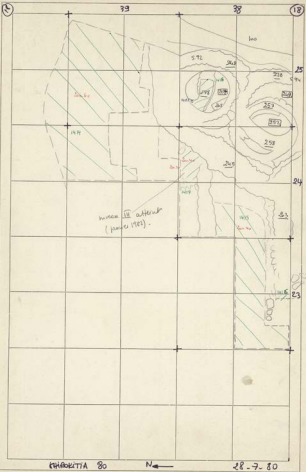


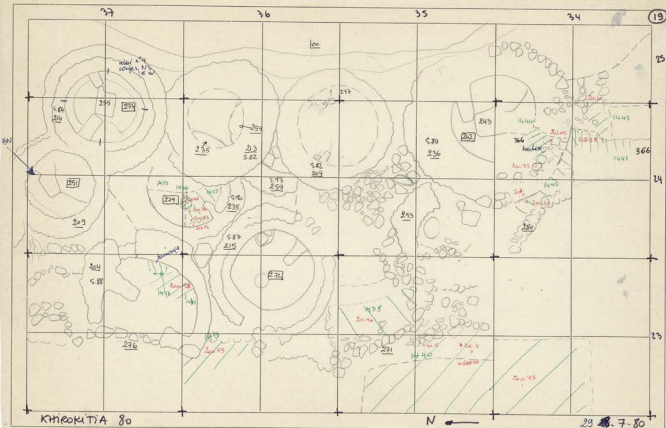


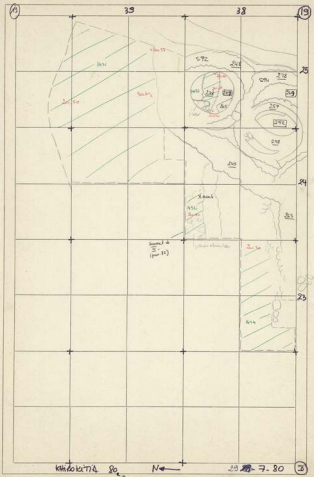
KOHOKUTTA 80

11 ←

27.7.80





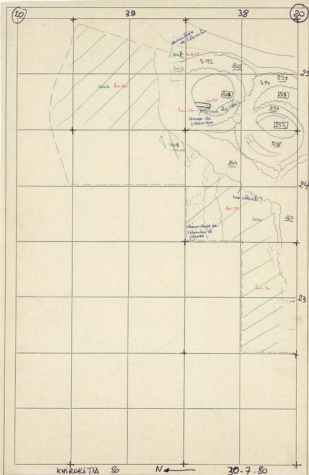


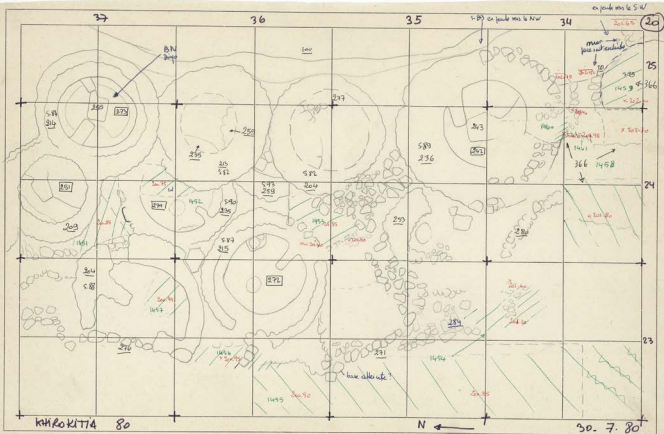
K. 192 K. 193 K. 194 K. 195 K. 196 K. 197 K. 198 K. 199 K. 200 K. 201 K. 202 K. 203 K. 204 K. 205 K. 206 K. 207 K. 208 K. 209 K. 210 K. 211 K. 212 K. 213 K. 214 K. 215 K. 216 K. 217 K. 218 K. 219 K. 220 K. 221 K. 222 K. 223 K. 224 K. 225 K. 226 K. 227 K. 228 K. 229 K. 230 K. 231 K. 232 K. 233 K. 234 K. 235 K. 236 K. 237 K. 238 K. 239 K. 240 K. 241 K. 242 K. 243 K. 244 K. 245 K. 246 K. 247 K. 248 K. 249 K. 250 K. 251 K. 252 K. 253 K. 254 K. 255 K. 256 K. 257 K. 258 K. 259 K. 260 K. 261 K. 262 K. 263 K. 264 K. 265 K. 266 K. 267 K. 268 K. 269 K. 270 K. 271 K. 272 K. 273 K. 274 K. 275 K. 276 K. 277 K. 278 K. 279 K. 280 K. 281 K. 282 K. 283 K. 284 K. 285 K. 286 K. 287 K. 288 K. 289 K. 290 K. 291 K. 292 K. 293 K. 294 K. 295 K. 296 K. 297 K. 298 K. 299 K. 300

N ←

1918-7.80

33



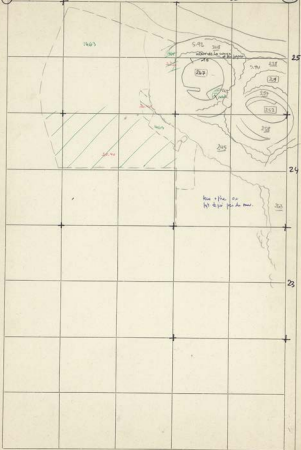


23

33

38

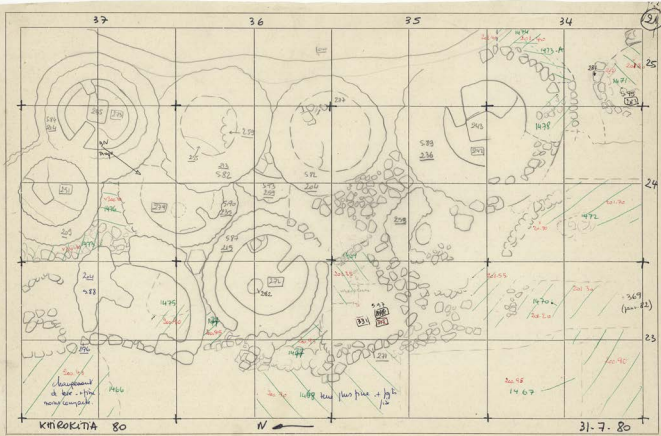
24

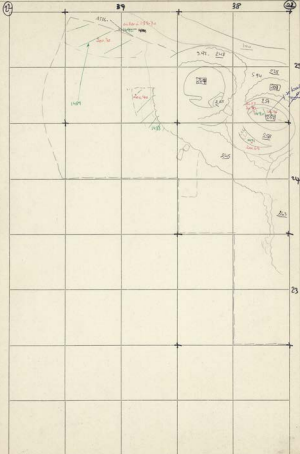


KHEOKITIA 80

N ←

31.7.80





KHAKA TA TA

30

N ←

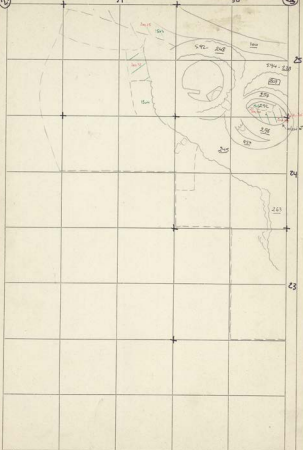
1-8. 30

23

39

38

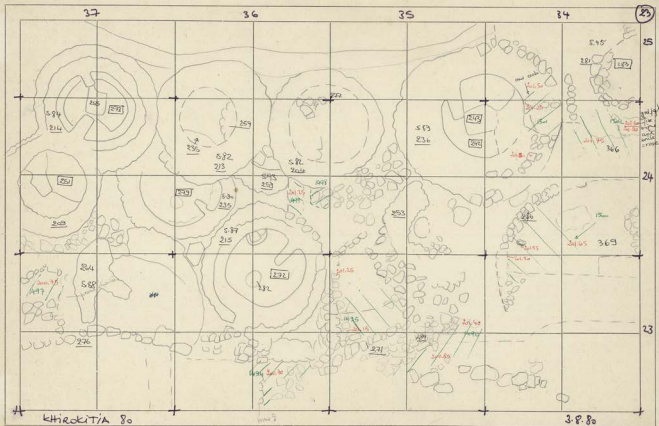
34

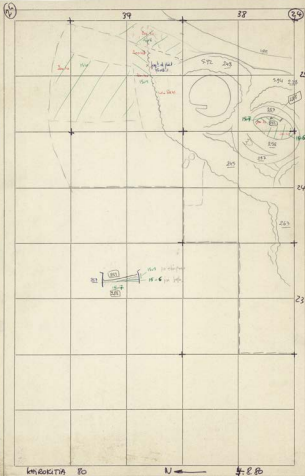


K. R. K. M. A.

N ←

3.8.80

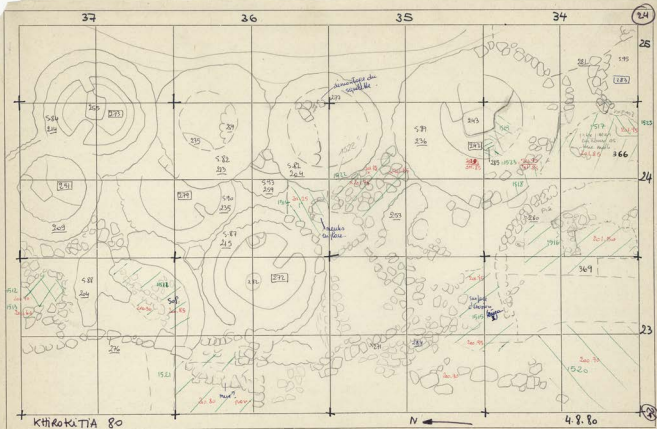


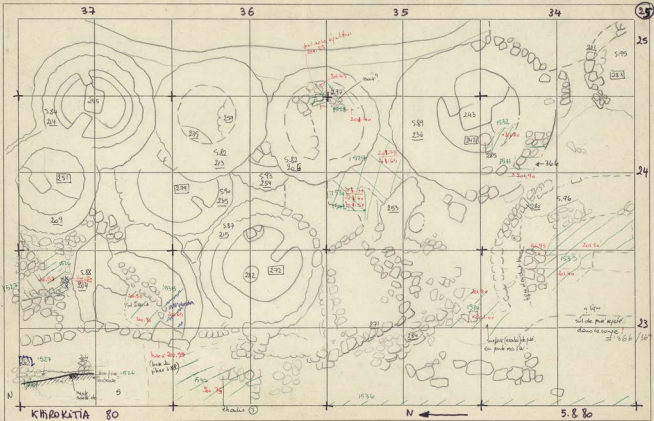


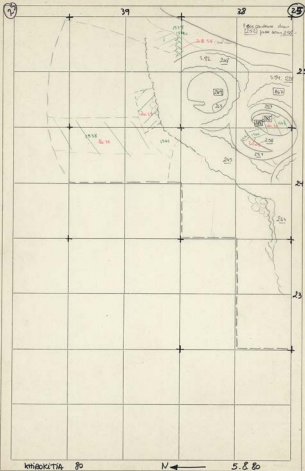
KANAKITIA 10

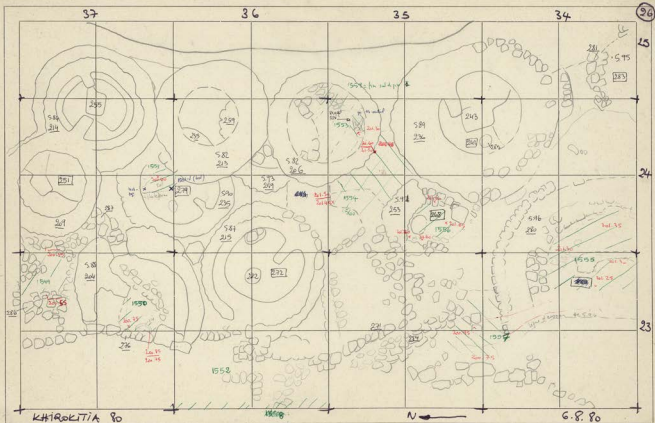
N ←

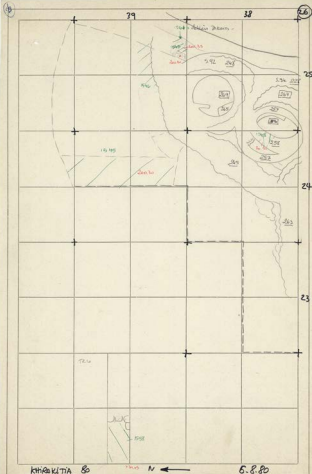
J. E. B.









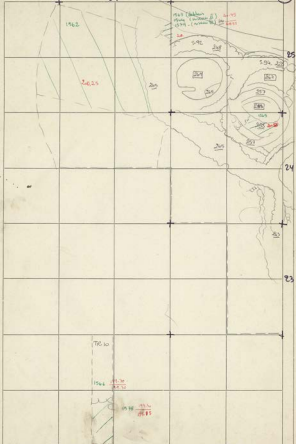


26

27

19

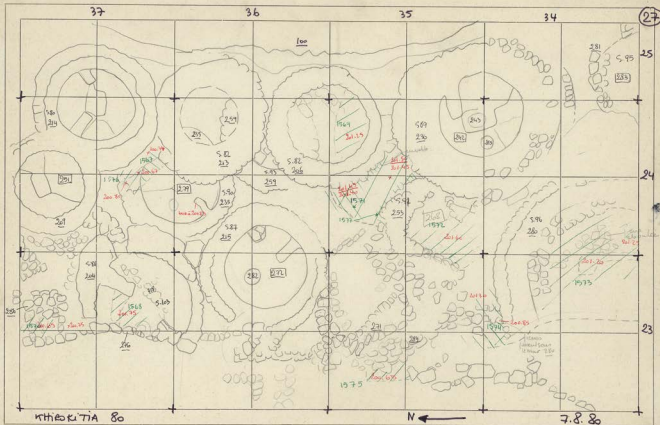
32



KHARAKHTIA 80

N

7-8.80



39

38

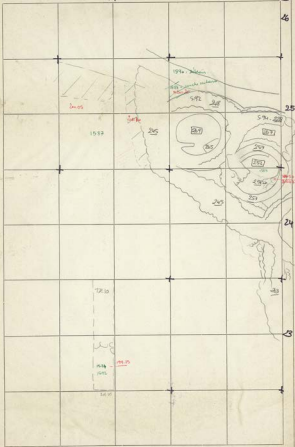
23

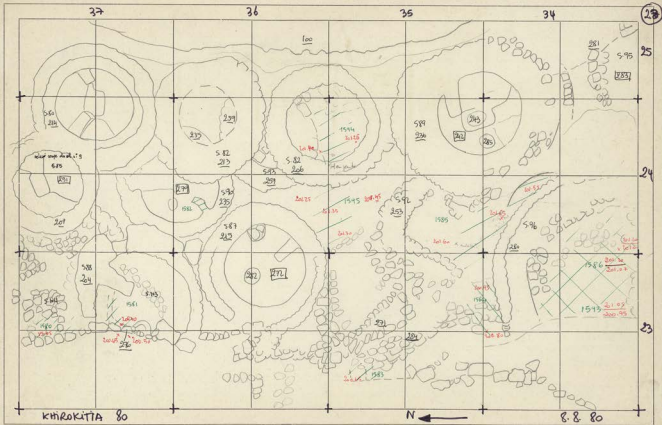
26

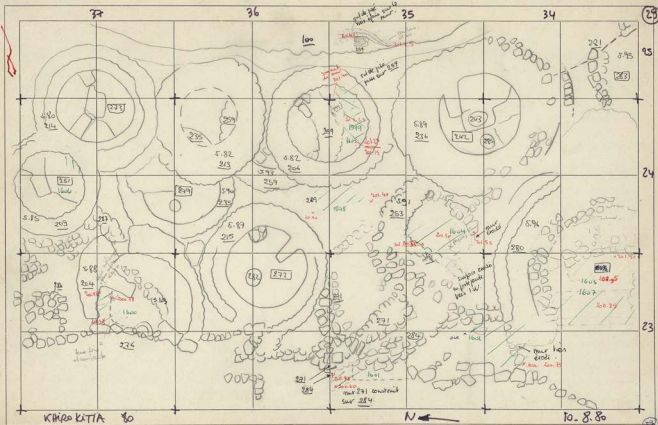
25

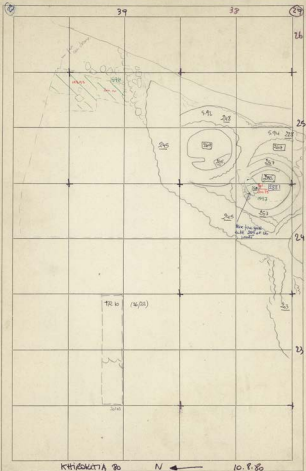
24

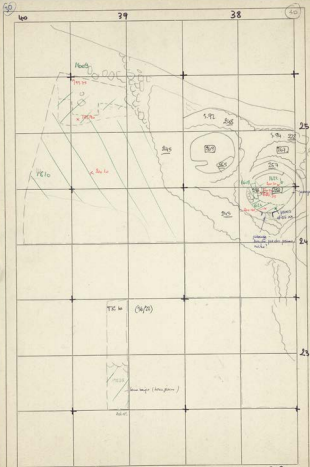
23

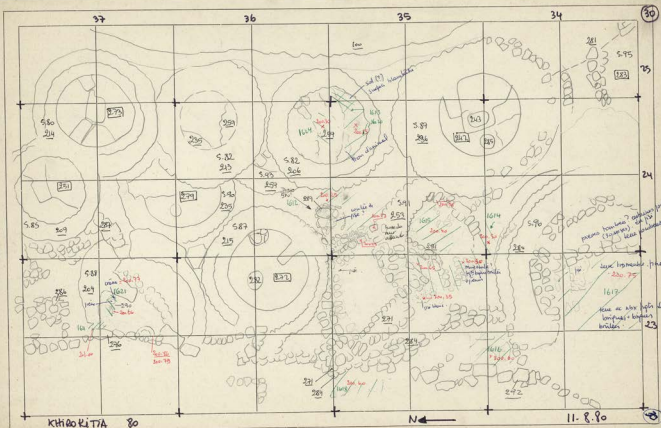








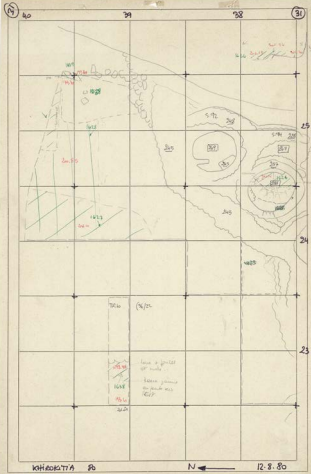


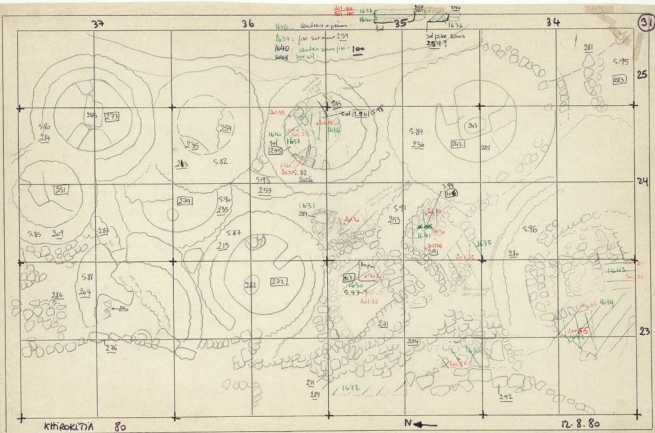


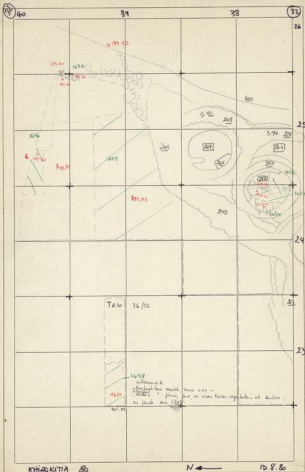
KHIRBAT AL-TIRA 80

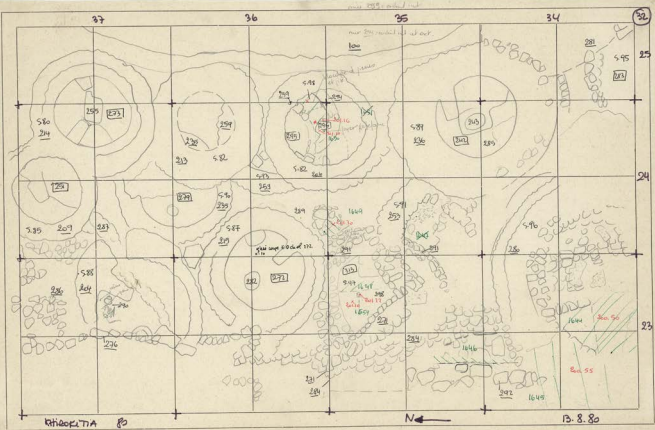
N ←

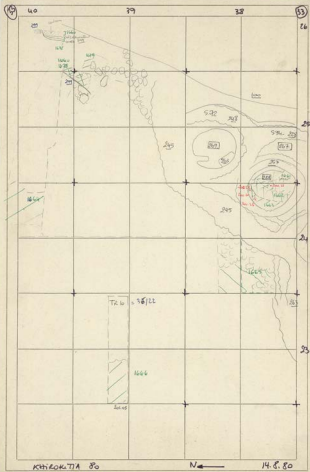
11. 8. 90

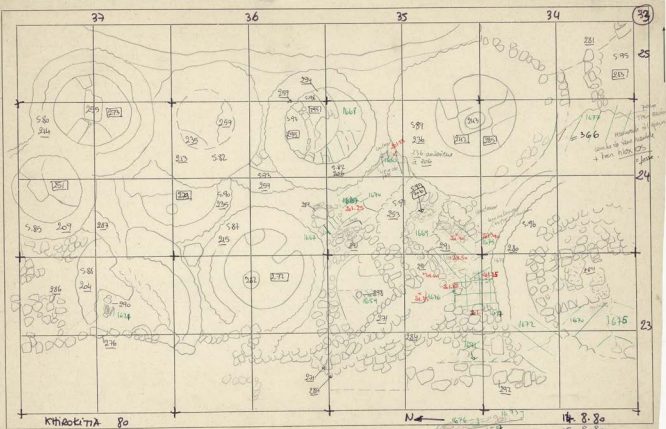


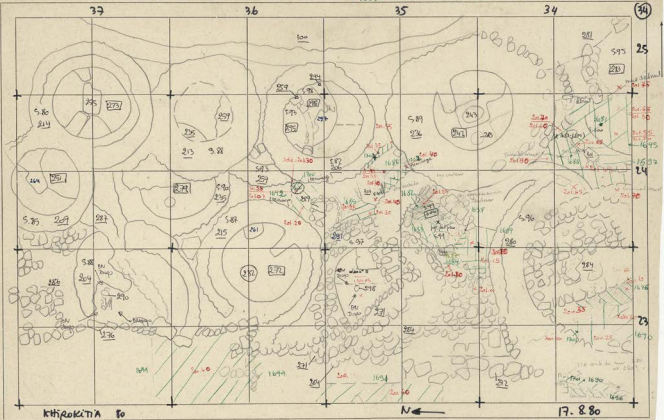


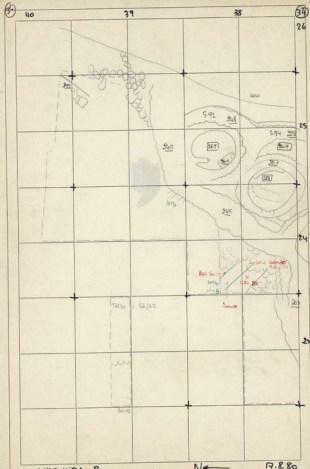








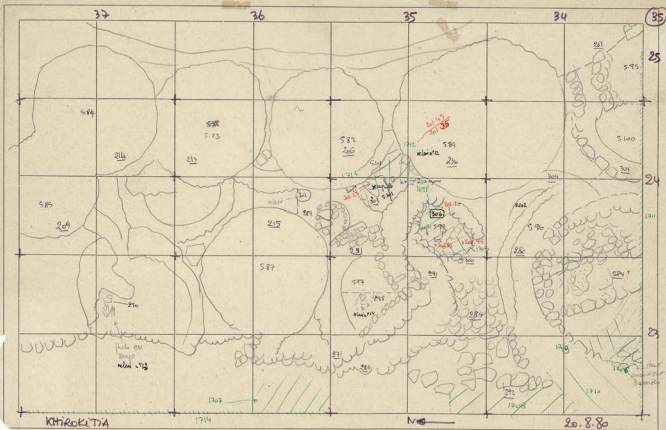


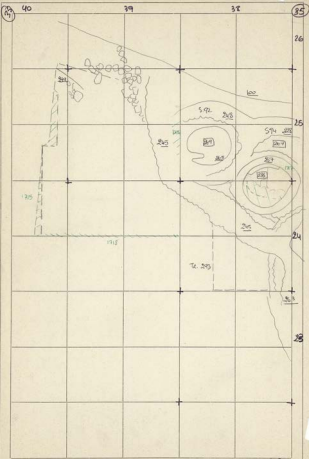


KITHIABAKI DA 80



19.8.80





KHIAKOTIA 80

North arrow

20.80